



# GTECH

# GTech **with Numbers**



**23  
Years**

**10+ Business Partners**

To provide best solutions, we are partnering with best technology leaders in the market.

**200+ Customers**

Our customers have been relying on us to create value from their data.

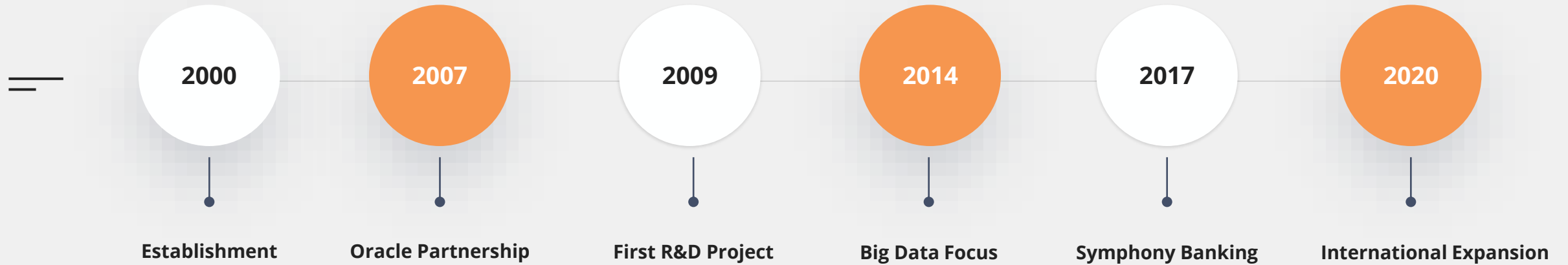
**10+ GTech Products**

With its extensive field experience, our team develops **technology-leading products** which can be easily configured to customer's needs.

**270+ Engineers & Consultants**

With the **technology oriented and agile team** we predict your future business needs and ensure you to achieve your goals.

# Our **Milestones**



# GTech **Turkey**

GTech has 4 **offices in Istanbul** to provide solutions and develop new products.



**Istanbul - HQ**  
Maslak



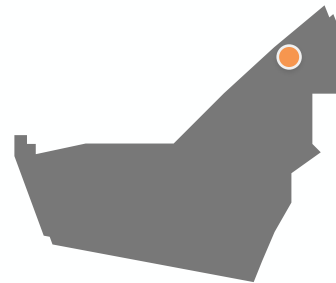
**Istanbul – R&D**  
Boğaziçi University & Yıldız  
Teknik University



**Ankara**  
Çankaya

# GTech **International**

As an international technology company, GTech offers its services and solutions to **Europe, UK, Central Asia and Africa.**



**Dubai**



# Our Partners



## Data & Analytics Solutions



**Data Warehouse  
& Business Intelligence**



**Big Data Technologies  
& Advanced Analytics**



**Budget Planning  
& Financial Consolidation**



**Database and System  
Management & Sup.**

## Finance Solutions



**Banking Solutions**



**Risk Analytics  
Solutions**

# Our Solutions and **Services**

# Banking and Finance Solutions



## **Symphony Banking**

Core Banking Solution, meet all banking requirements



## **Symphony Lending**

Customer Lending Solution, combines all technical requirements on a single platform



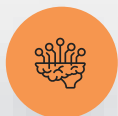
## **Symphony Digital**

It enables organizations to manage customer processes securely



## **Symphony Labs**

The Open Banking Platform drives customer and profitability growth



## **Symphony Sense**

It is a real-time monitoring solution that enables the collection of metrics from many systems



## **Magic Reports**

Legal Reporting Solution, combines all financial data on a single platform



## **EyeQube Engine**

Credit Scoring Solution, makes complex decisions based on machine learning technologies.



## **Smartbank**

Big Data Processing Platform, monitors the experience by capturing the digital footprints of the customer

# Moody's Analytics Risk Solutions

Moody's Analytics provides financial intelligence and analytical tools to help business leaders make better, faster decisions. Moody's Analytics offers its industry-leading portfolio of award-winning solutions to Turkish Market with GTech partnership.



## CreditLens

Credit Lifecycle Management Solution



## RiskConfidence ALM

Asset-Liability and Market Risk Solution



## RiskFrontier

Credit Portfolio Risk Management Solution



## RiskAuthority

Regulatory & Legal Reporting Solution



# Datawarehouse & Business Intelligence

Being the biggest solution provider in Turkey GTEch has 22 years of local and global projects experience in all sectors. More than 100 customers in rely on GTEch Expert team to have modern data-driven decision support systems.



## Data Management Services

Manage the single truth of data source and provide data quality



## Business Intelligence Services

Analyze and report the data, support the real time data-driven decisions



## Training & Support & Long-Term Consultancy

Services to provide outsourcing for all needs with best consulting team



## Wiseboard Retail / Wiseboard Insurance

Analytical solutions with sector specifics KPIs and architecture

# Big Data & Advanced Analytics

With proven success in big data projects at leading companies, GTECH's expert team ensures focus on creating value by having most suitable big data platform and provides maintenance support for the development and continuity of the created big data ecosystem.



## Striim – Real Time Analytics

A real-time big data integration and analysis platform.



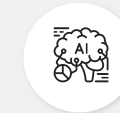
## Big Data & NoSQL Services

Consultancy and maintenance support for your big data ecosystem.



## Data Science Services

Consultancy, development and support for latest data technologies.



## Training & Outsourcing Qualified Resources

Hands-on training and well-equipped expert resources



## Eyeqube Retail

Sales and Inventory Forecasting Solution that plays an active role in all operations



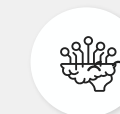
## EyeQube Mineral

Data transfer platform.



## Rent Manager

Lease agreement management application.



## EyeQube Motto

A platform that provides analysis of online channel data.



# Budget Planning & Financial Consolidation

GTech expert team with deep knowledge and field experience, provides consultancy within the scope of Enterprise Performance Management technologies enable decision makers to take action at the right time.



**Planning, Actual vs Budget Reporting Solutions**



**Financial Management, Consolidation Solutions**



**EPM Integration, Reporting Solutions**

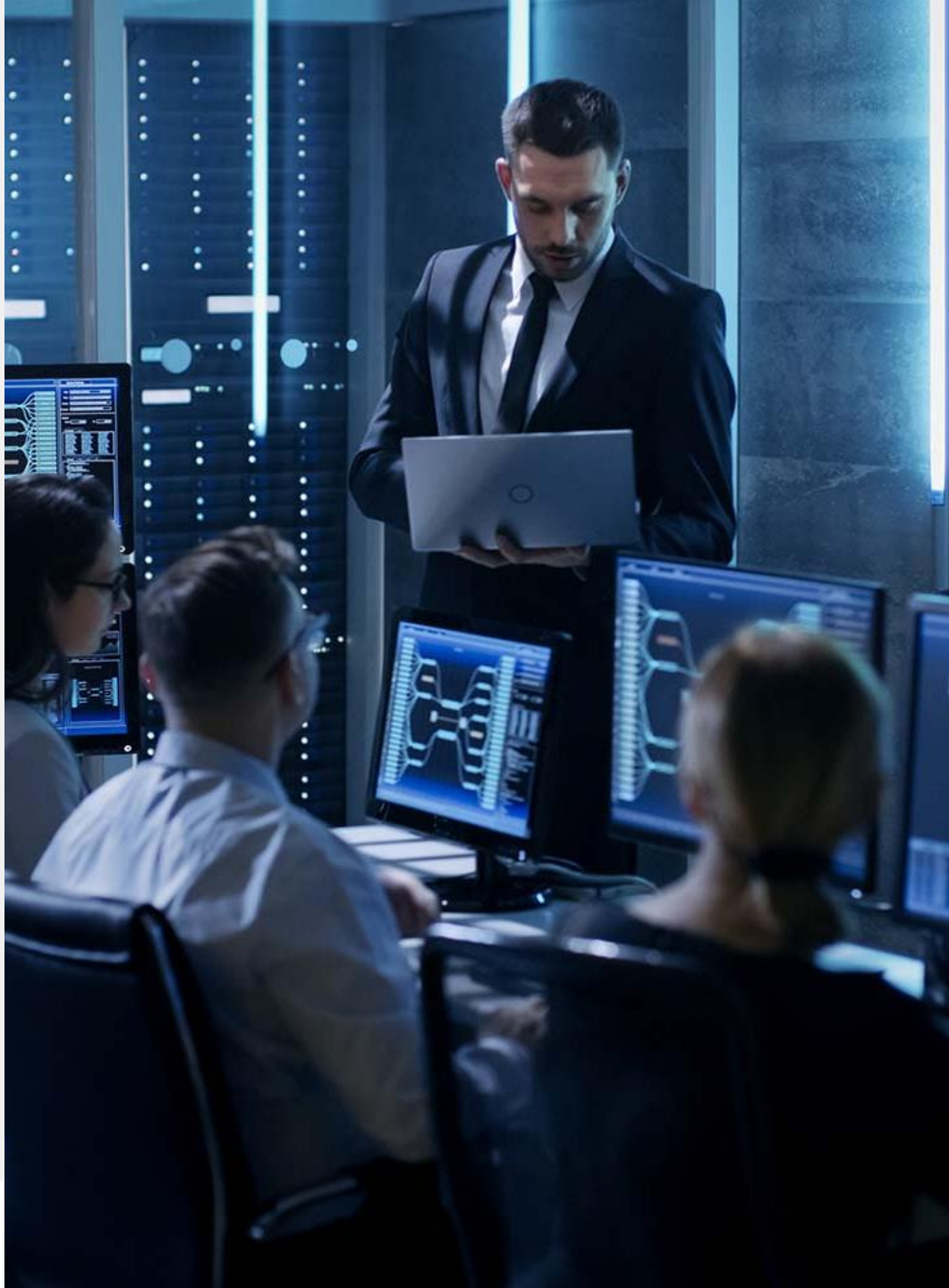


**Training & Outsourcing Qualified Resources**



**Cubeview HR (Human Resources Budget Planning Solution)**





# System & Database Management **Services**

GTech expert consultants provide high quality system management services, develops solutions for customer needs and offers turnkey projects including consultancy and maintenance services.



**Database Services**  
(Oracle, MSSQL, PostgreSQL)



**Engineered System Services**  
(Exadata, Exadata Cloud at Customer, PCA, ODA)



**Apps DBA For EBS Services**



**Oracle Fusion Middleware Services**



**Health Check Services**



**Training & Outsourcing  
Qualified Resources**







## Project

Production Prediction and Predictive  
Device Maintenance for wind turbines  
PP&PDM4WT

## Project Coordinator

GTech

[www.gtech.com.tr](http://www.gtech.com.tr)

## Contact

Hicran Gülşen

[hicran.gulsen@gtech.com.tr](mailto:hicran.gulsen@gtech.com.tr)



## Objective

Developing a platform for wind turbines for predictive device maintenance, aiming to alert the system before the problems. Moreover, with the scope of this project, renewable energy production prediction will be developed.

## Key Problems

- For wind turbines device maintenance is very crucial
- Failure to accurately predict the energy to be produced from wind turbines due to climate changes
- Cost increase

## Proposed Solution

- Reliable Data Collection and Integration Services
- Multiple data collection correlation to predict the energy production
- Secure Data Storage for Transparency
- Predictive Insights and Improvement Recommendations with AI
- Continuous Monitoring and Reporting



## Proposal

There is a failure to predict the energy production due to climate change for wind tribunes. And also, there is no alert system for the device faults. Therefore, it is needed to collect the data via gateway, multiple data collection correlation to predict the energy production, improve the recommendations with AI and predict the energy productions for the producers.

## Partners Involved

- GTech, Türkiye
- Sanko Enerji, Türkiye

## Missing Partner(s)

- IoT partner(Industry, SMEs)
- Partners for Pilot Application



# THANK YOU!

**Web:** [www.gtech.com.tr](http://www.gtech.com.tr)

**Mail:** [info@gtech.com.tr](mailto:info@gtech.com.tr)

