

ANADOLU ISUZU



ANADOLU GROUP



// ANADOLU ISUZU

ISUZU

ANADOLU ISUZU

 R&D

AR-GE MERKEZİ



R&D CENTER

- **The R&D culture** since the establishment of AIOS's in 1986
- **One of the first approved R&D centers** of Turkey
- **~300** employees
- Closed area of **6000 m²**
- **All the necessary R&D steps** from sketch to product with its Design Office, Prototype Workshops ve Test Center



R&D CENTER SECTIONS



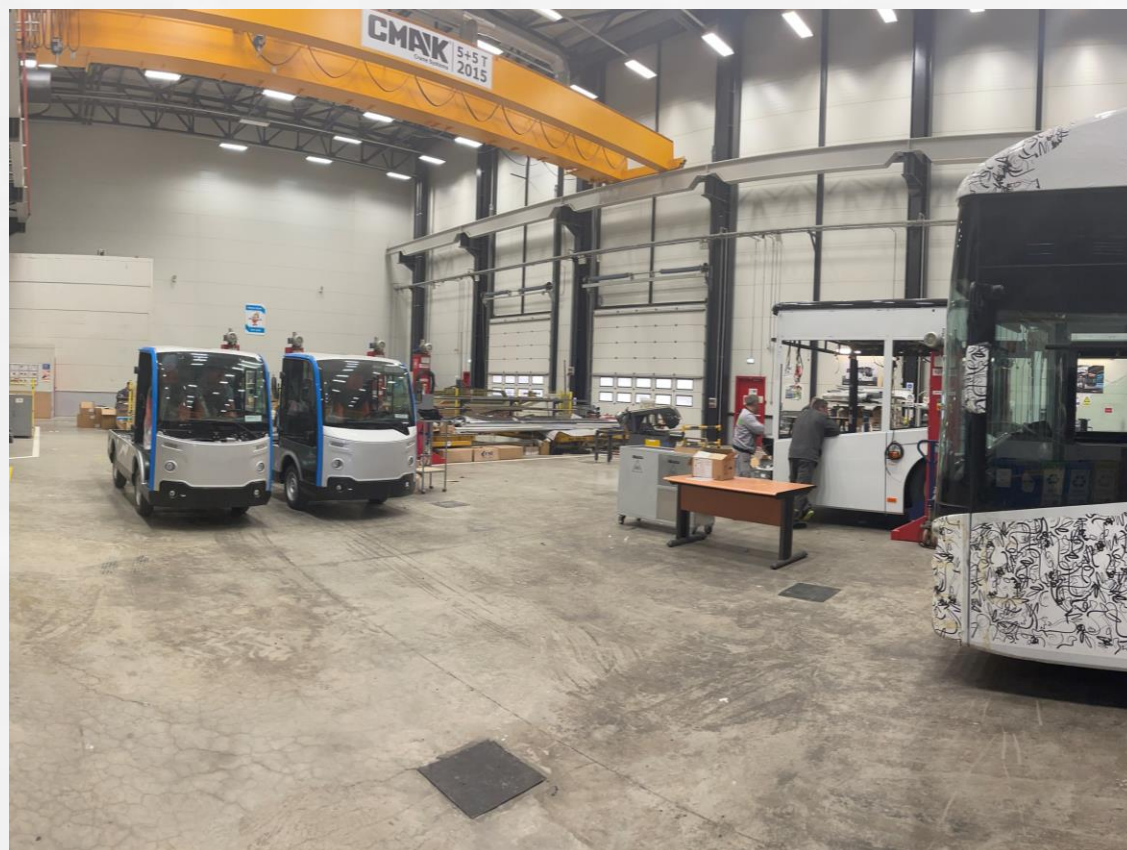
DESIGN OFFICE



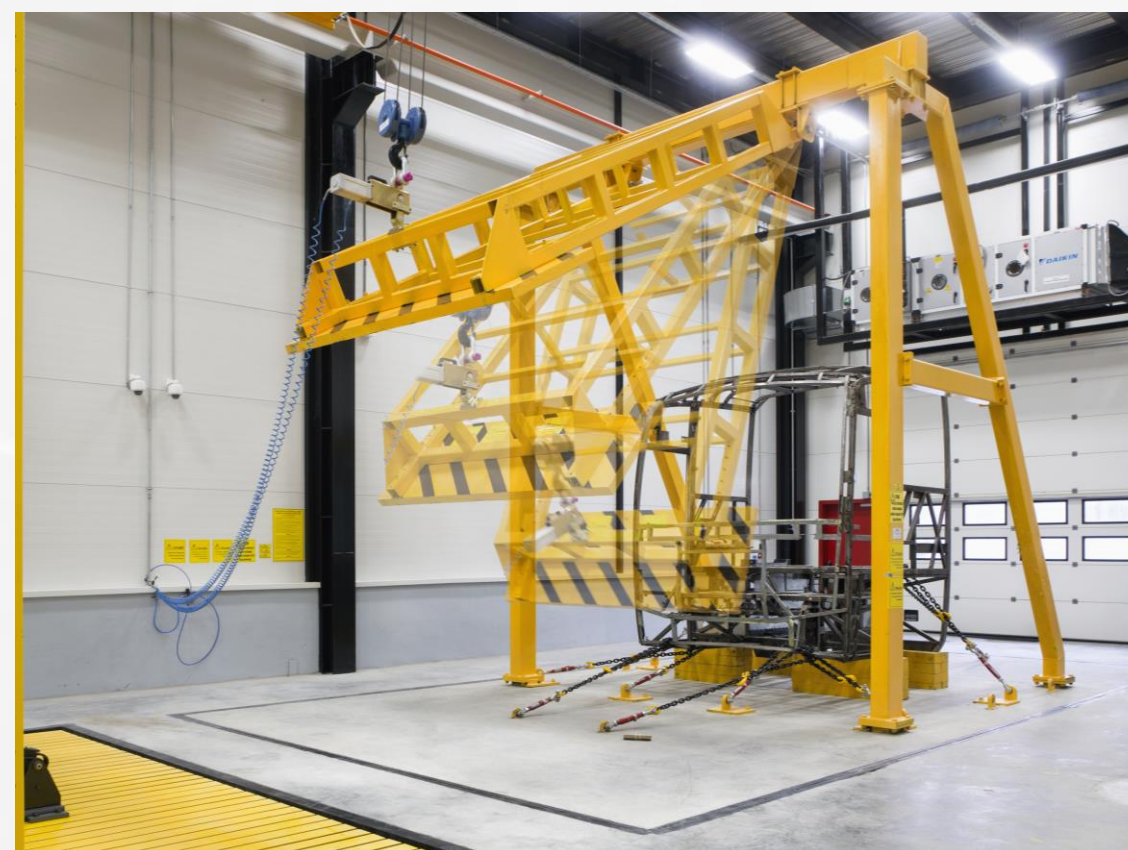
R&D OFFICE



DEFENCE PROJECTS WORKSHOP



PROTOTYPE WORKSHOP



TEST CENTER



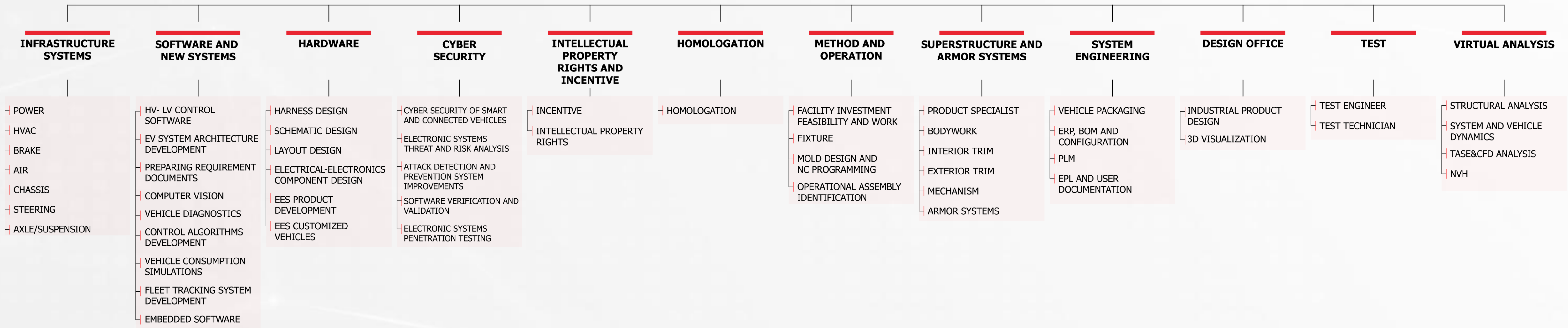
CLIMATE ROOM



ELECTRICAL AND ELECTRONIC LABORATORY

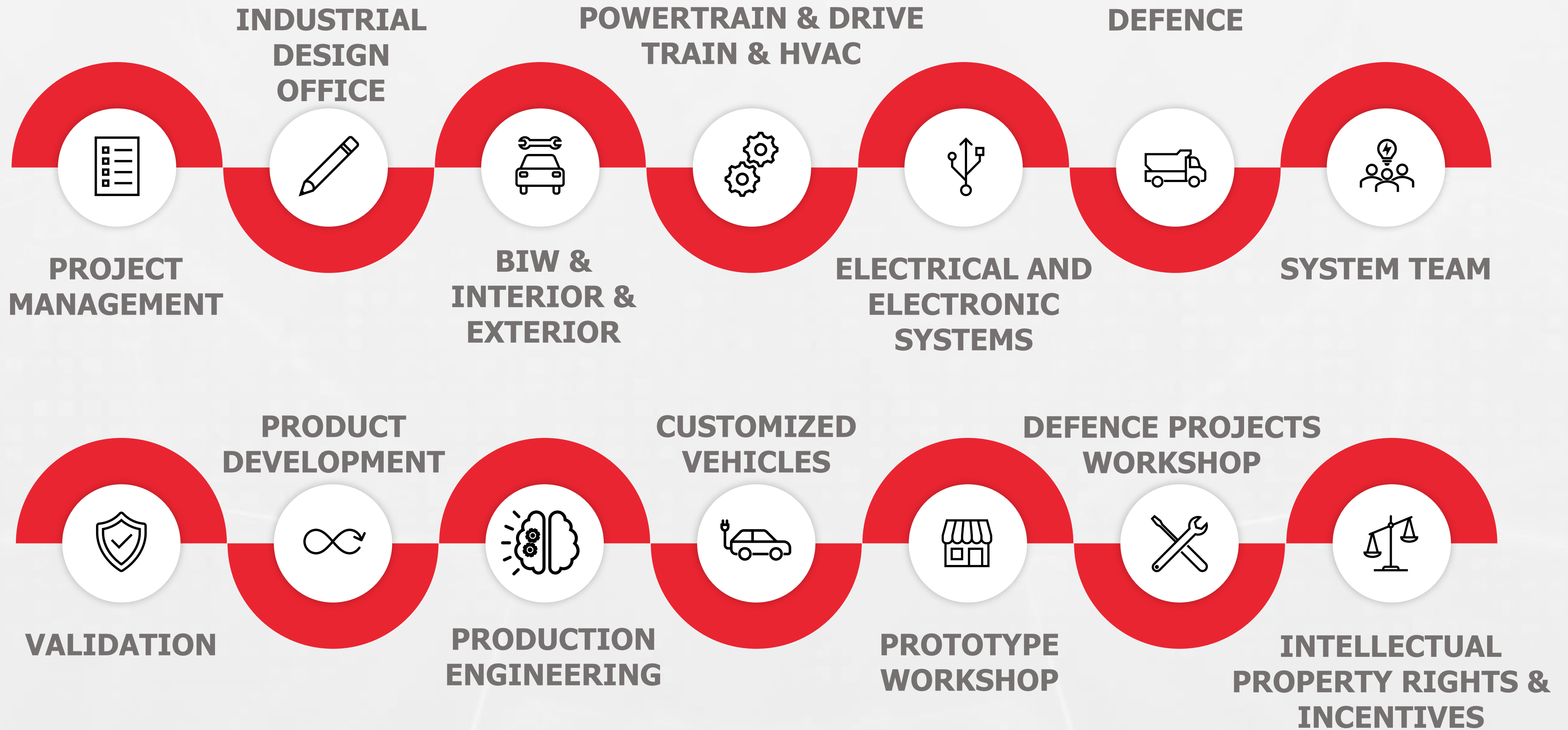
R&D SPECIALIZATIONS AND SUB-SPECIALTIES

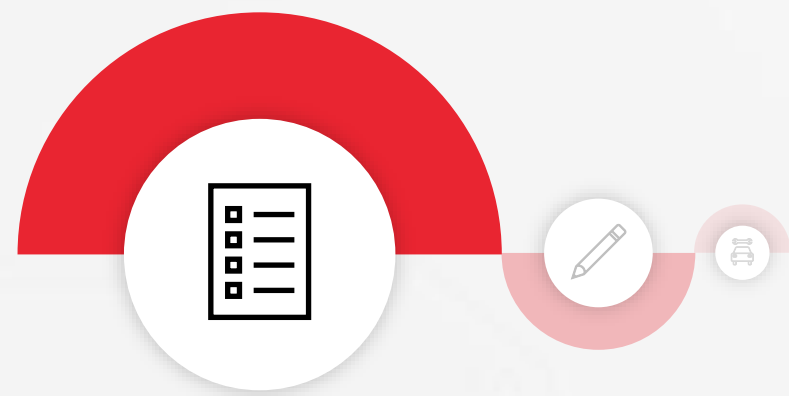
SPECIALIZATIONS



12 MAIN SPECIALIZATIONS AND 52 SUB-SPECIALTIES

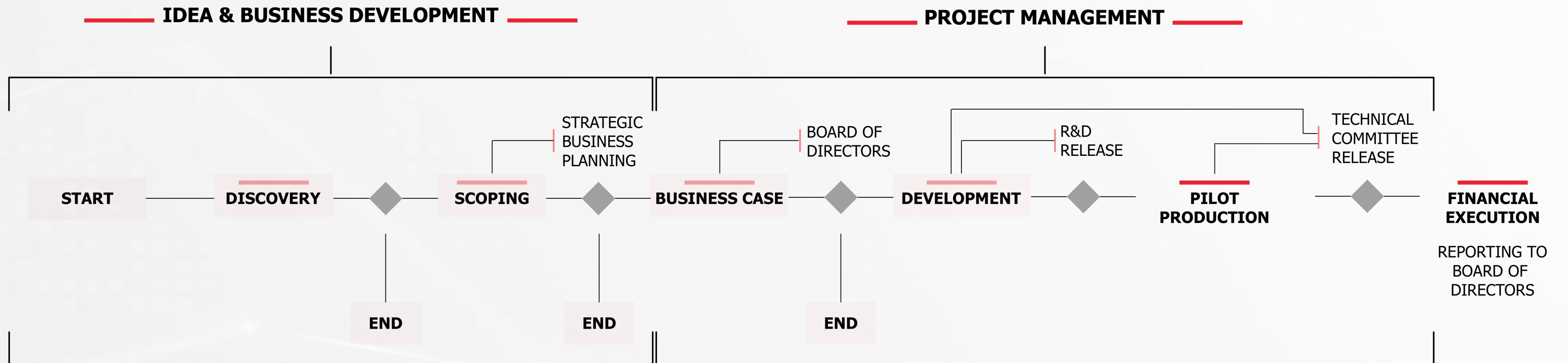
R&D CENTER DIVISIONS





PROJECT MANAGEMENT

R&D CENTER DIVISIONS



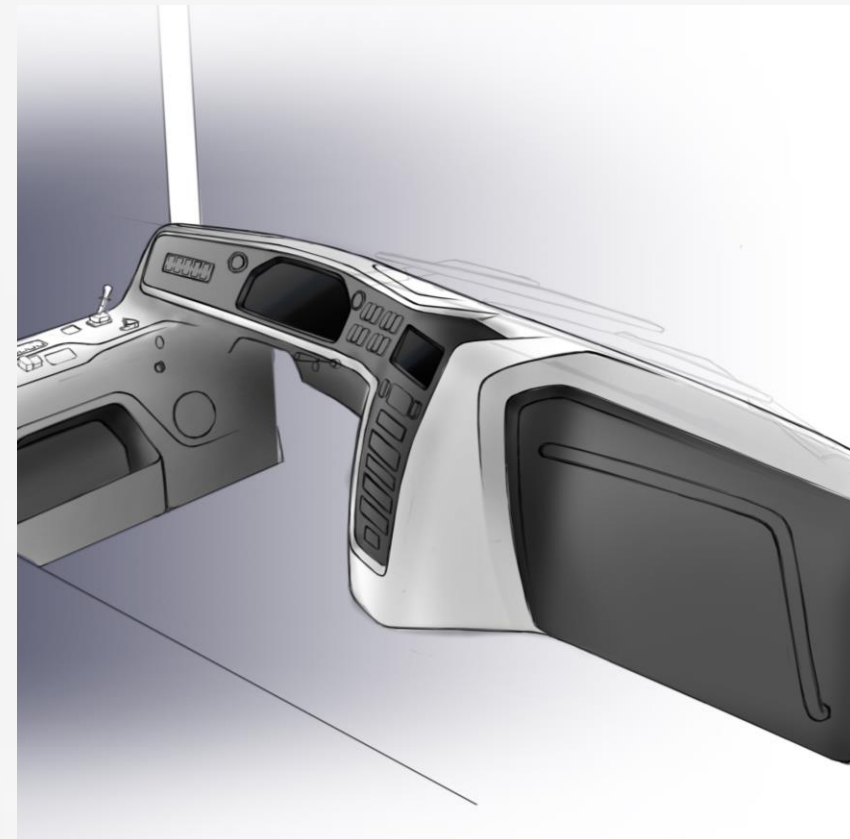


R&D CENTER DIVISIONS

INDUSTRIAL DESIGN OFFICE



STYLING



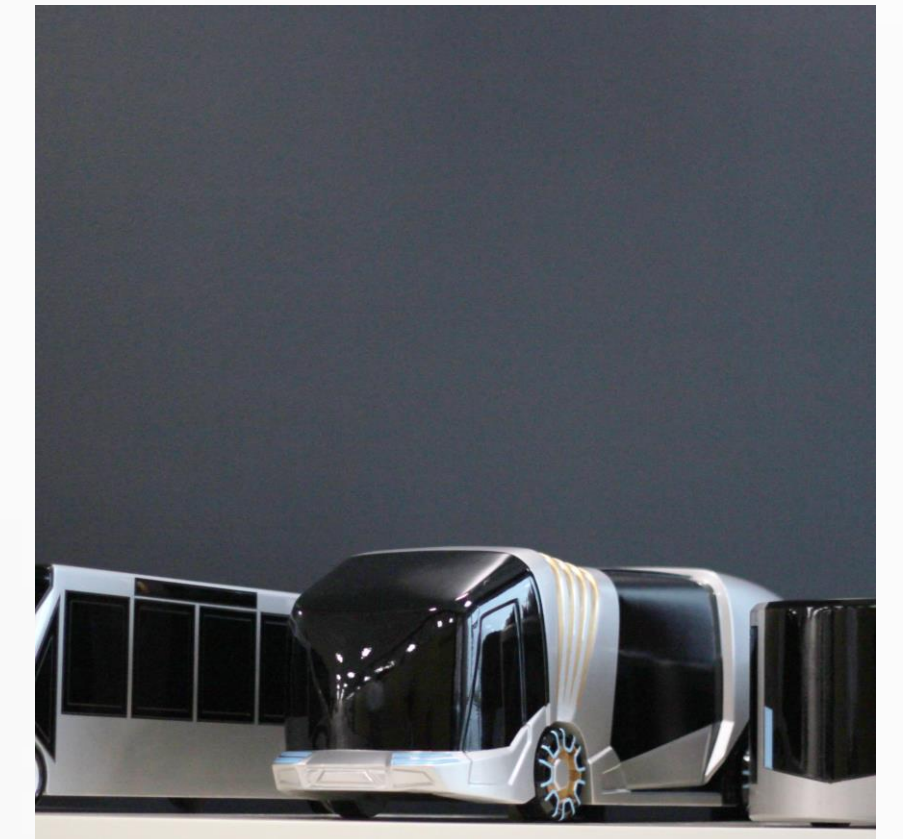
2D ILLUSTRATION



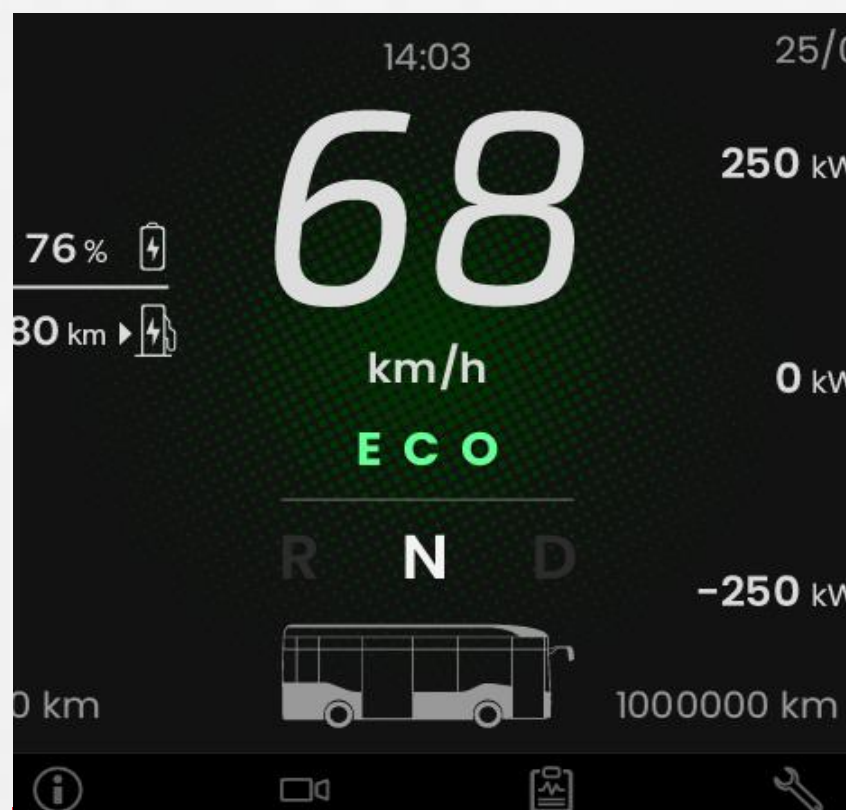
3D MODELLING



PHOTOREALISTIC RENDER



SCALE MODEL



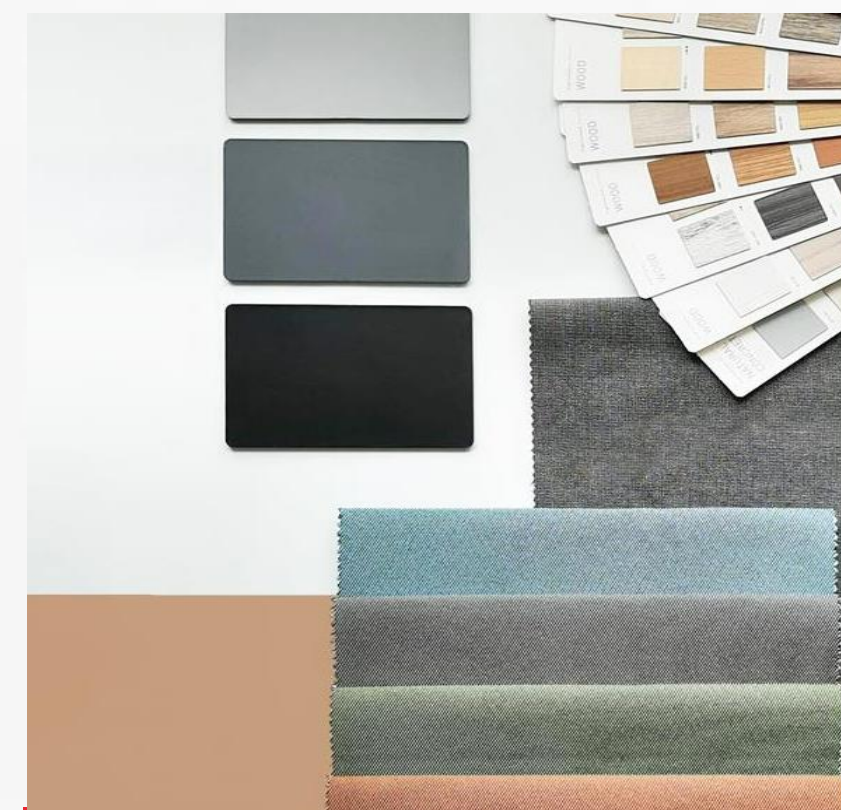
INTERFACE DESIGN



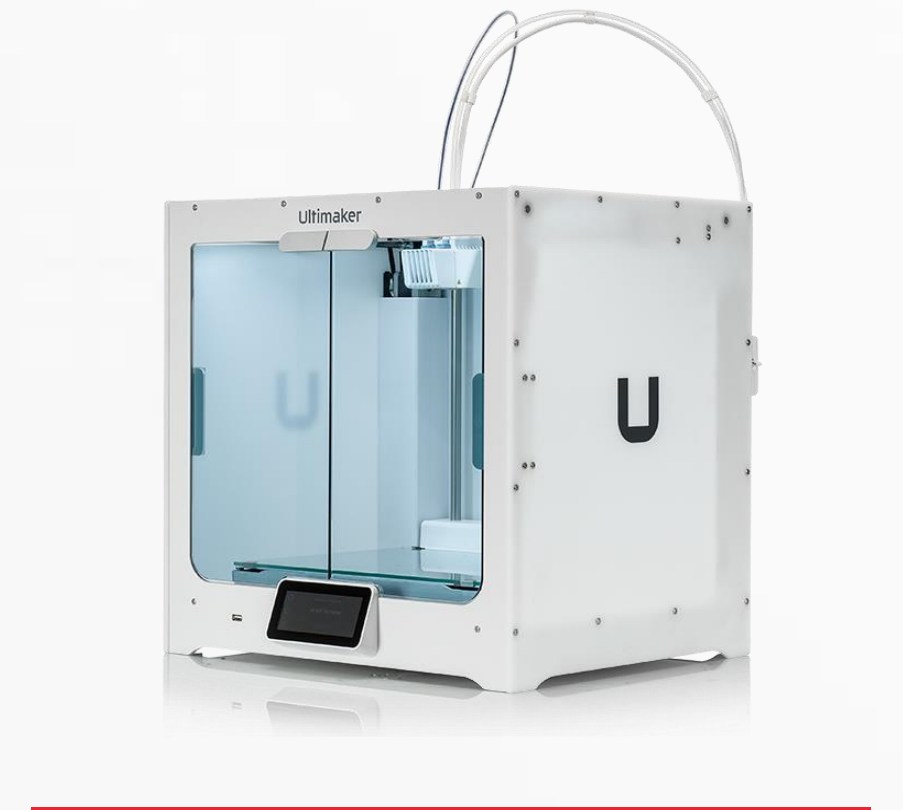
VR VERIFICATION



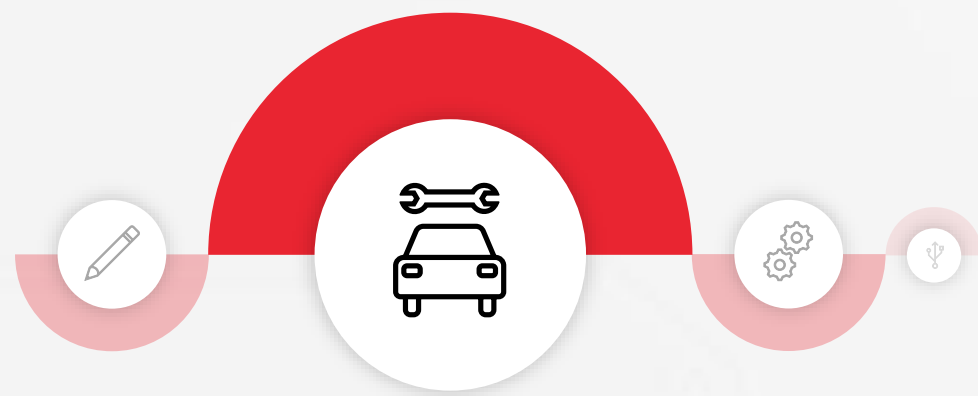
GRAPHIC DESIGN



CMF



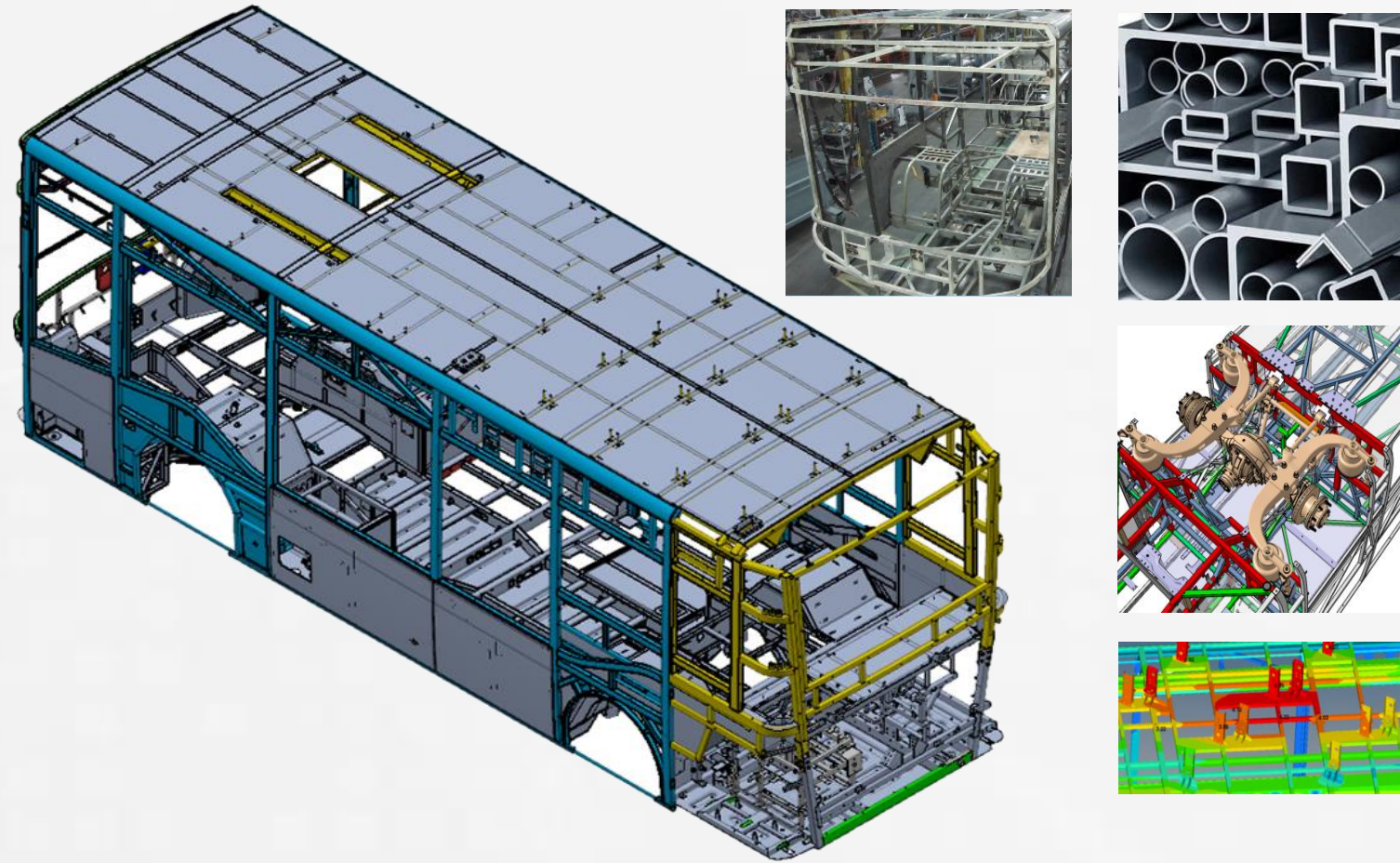
3D PRINTER



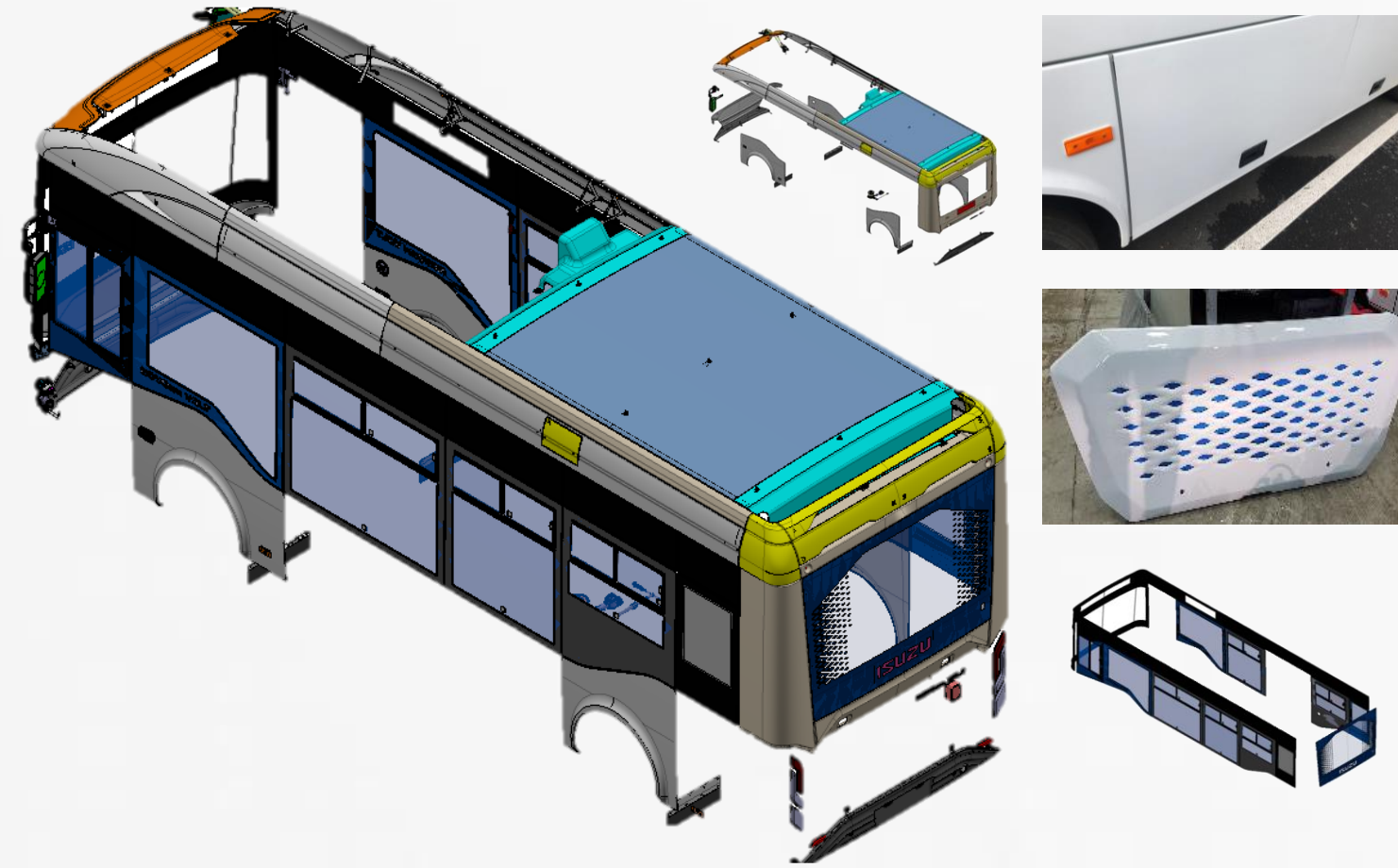
R&D CENTER DIVISIONS

BIW & INTERIOR & EXTERIOR

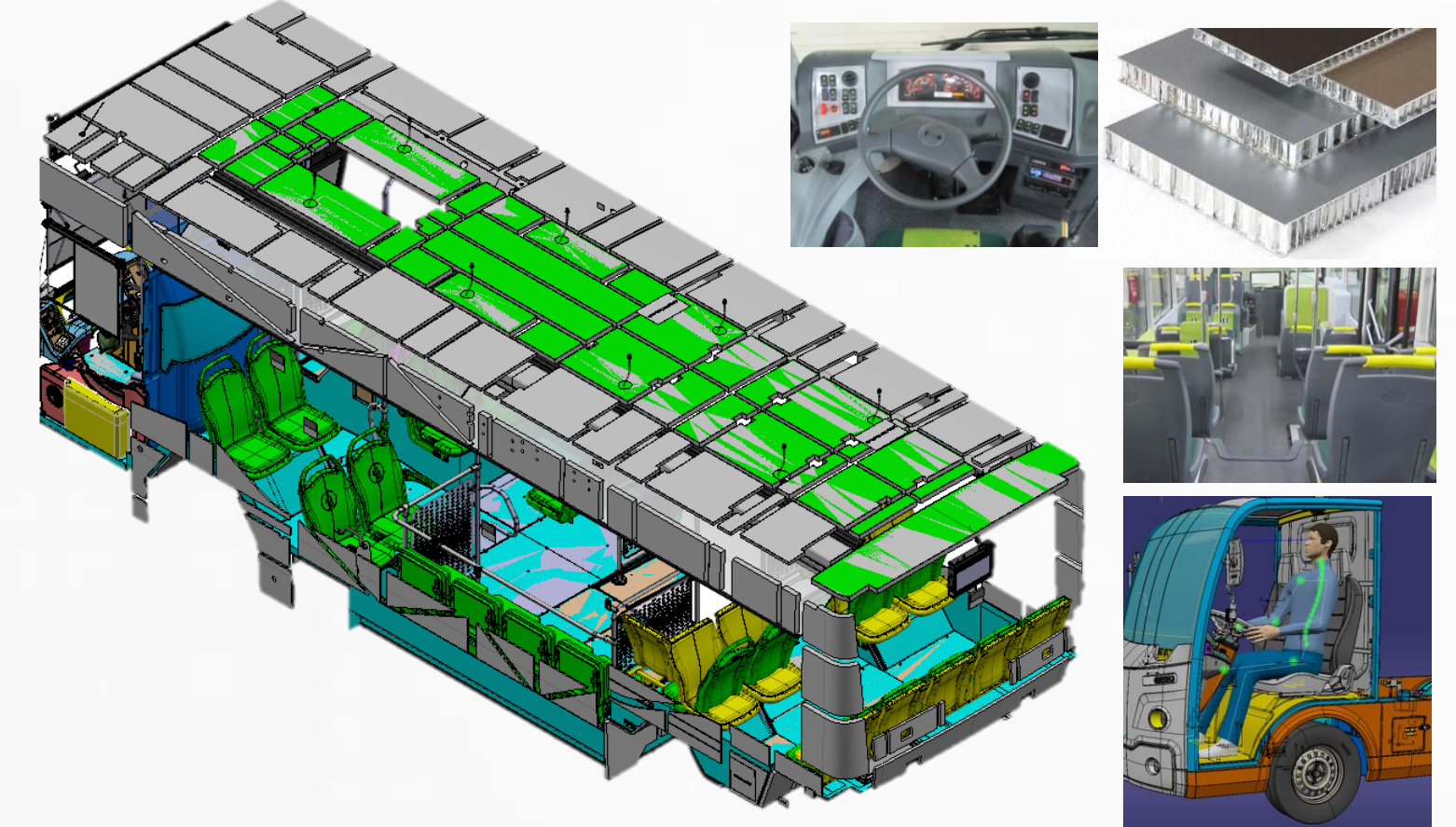
BIW



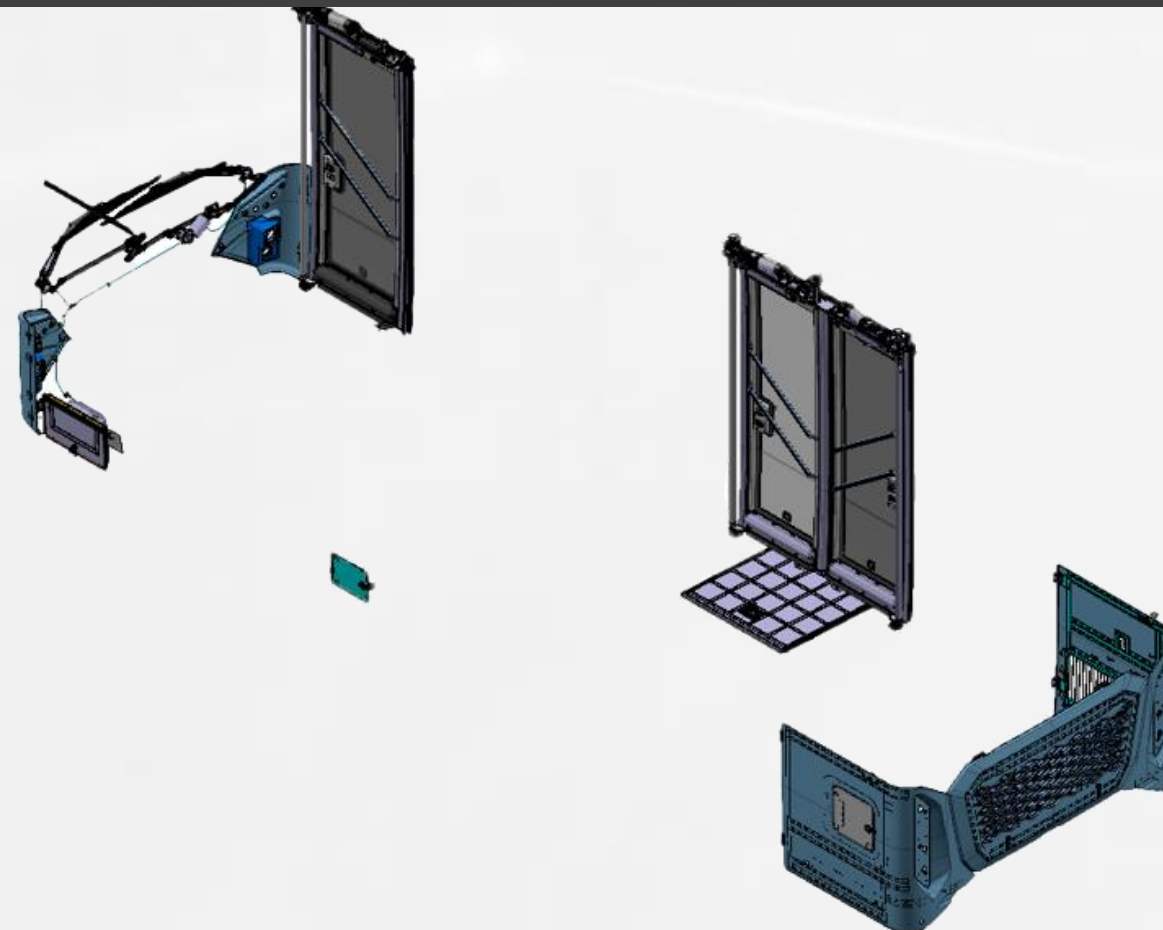
EXTERIOR



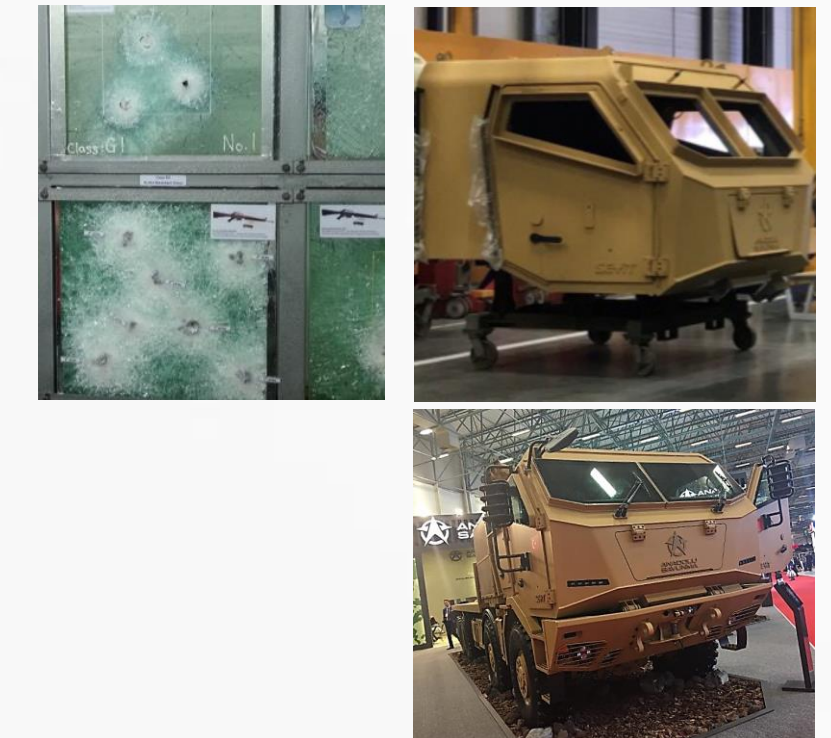
INTERIOR



MECHANISM



ARMOR SYSTEMS

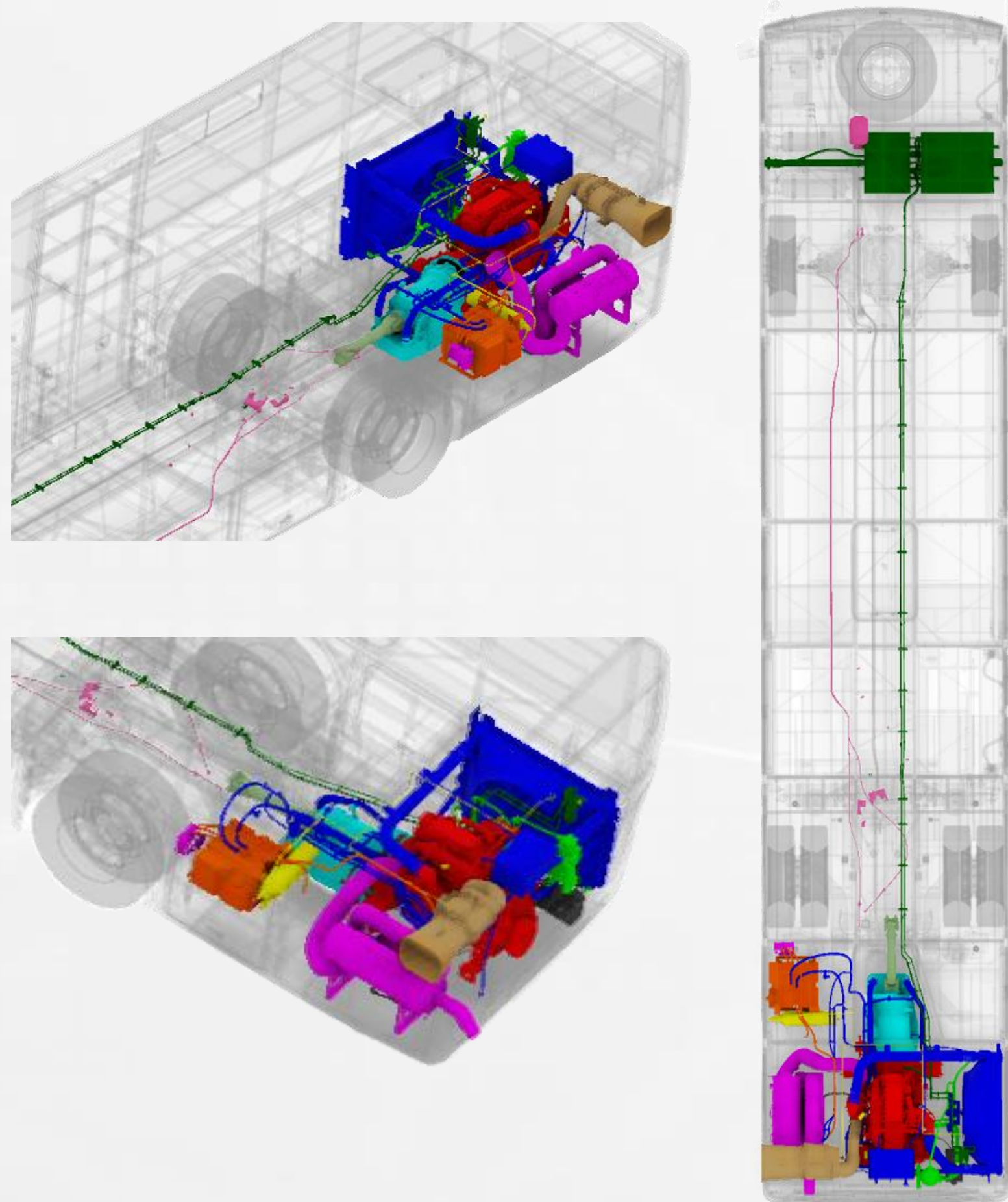




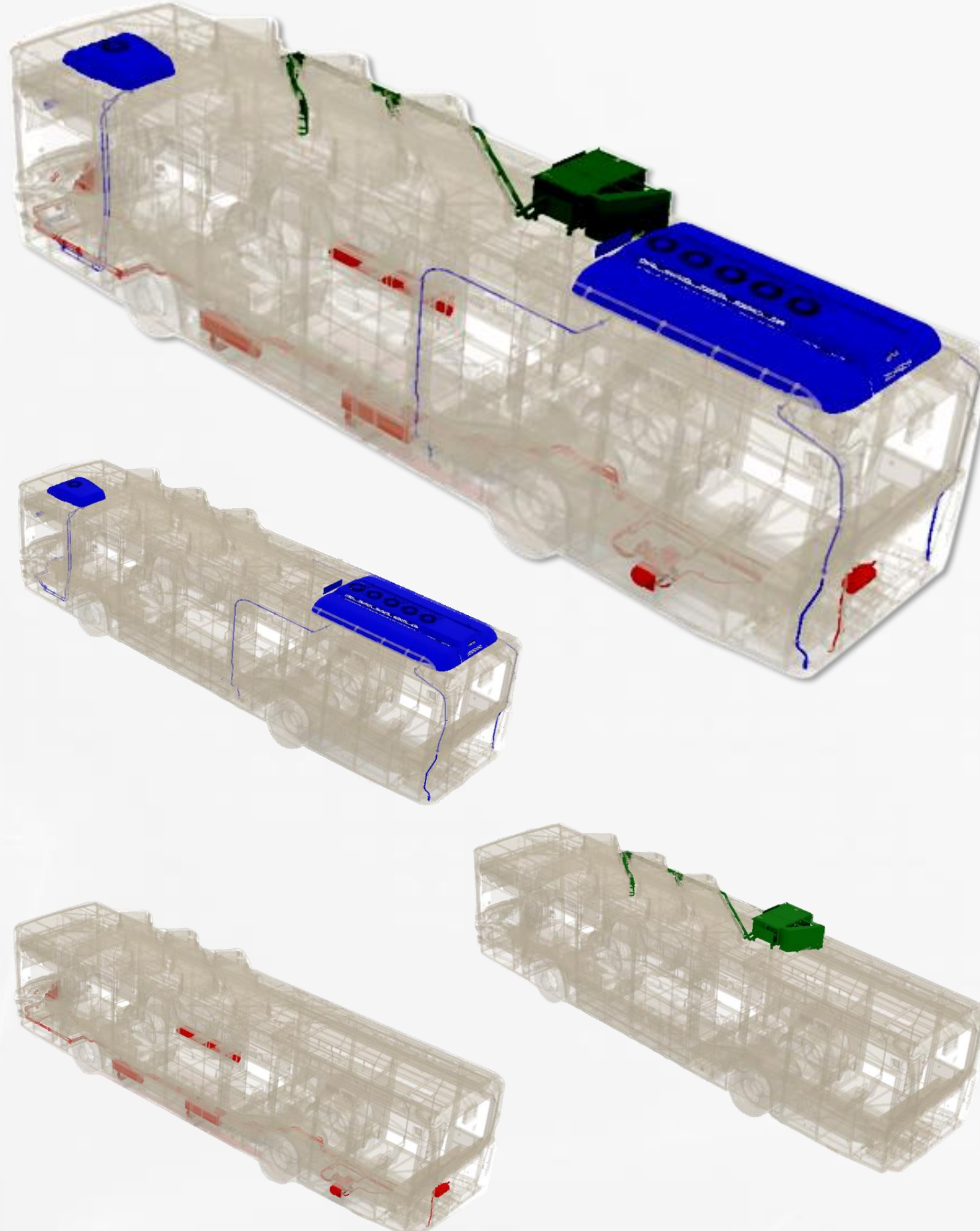
R&D CENTER DIVISIONS

POWERTRAIN & DRIVE TRAIN & HVAC

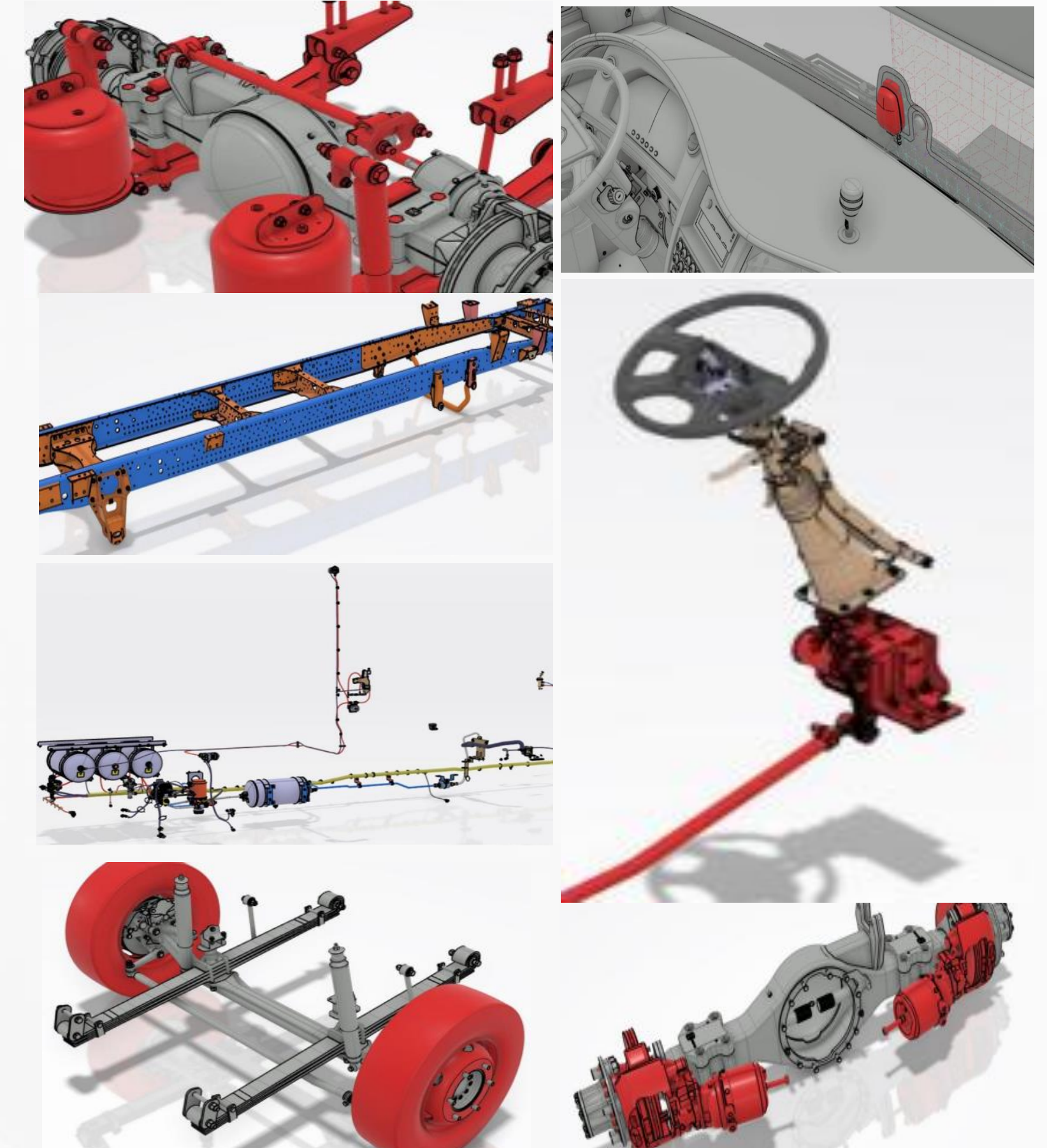
POWERTRAIN

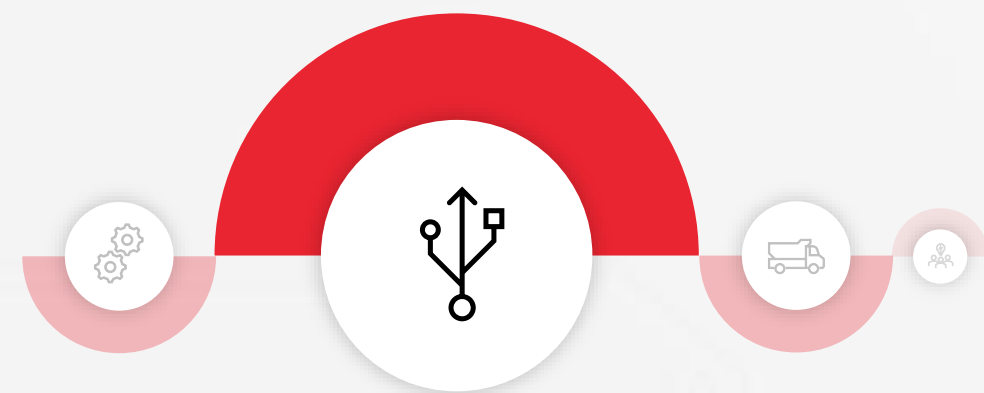


HVAC



DRIVE TRAIN





R&D CENTER DIVISIONS

ELECTRICAL AND ELECTRONIC SYSTEMS

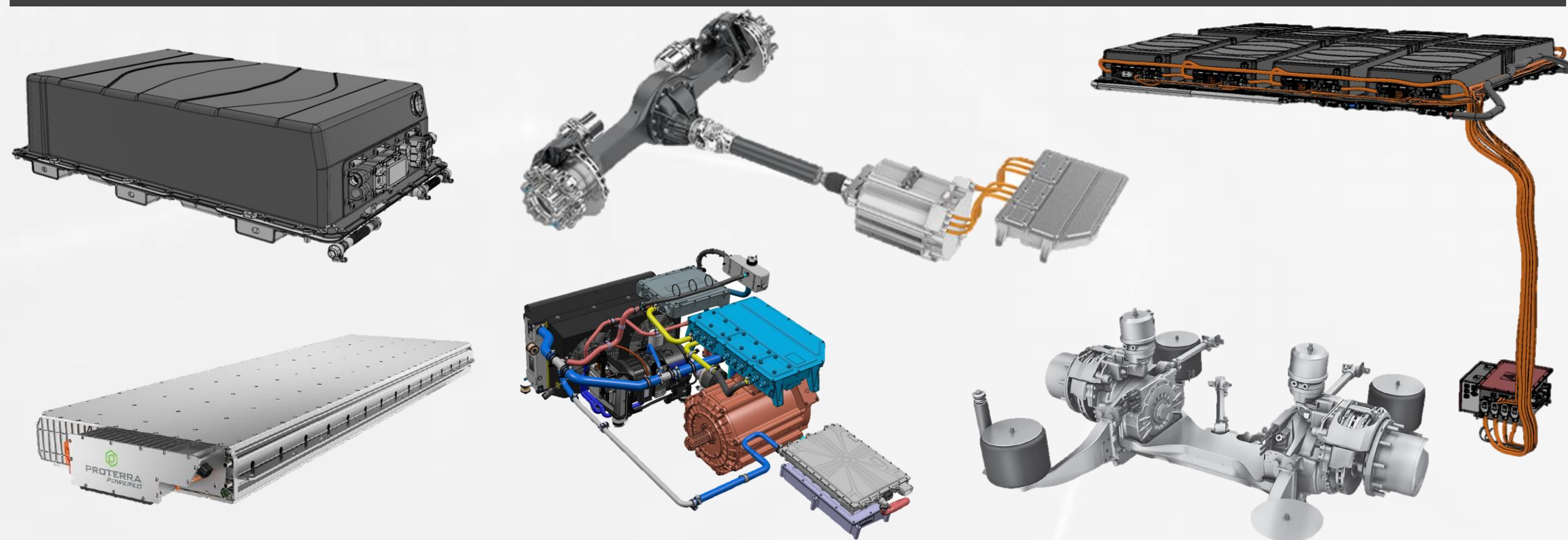
SOFTWARE



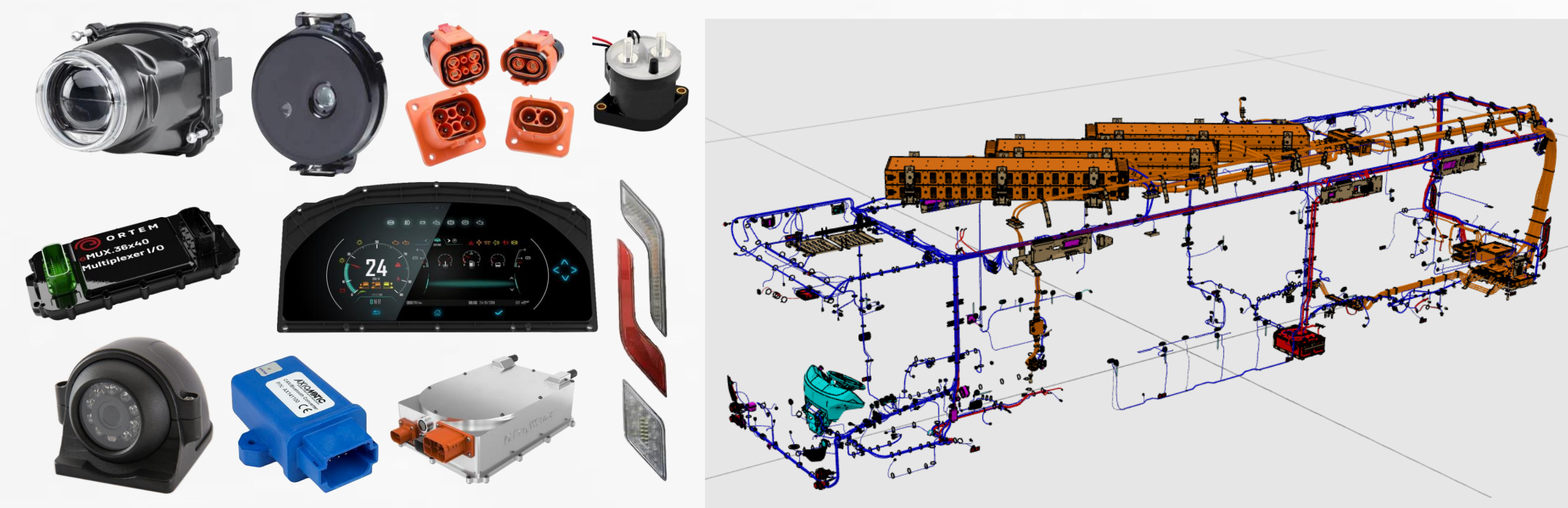
CYBER SECURITY & SOFTWARE TEST

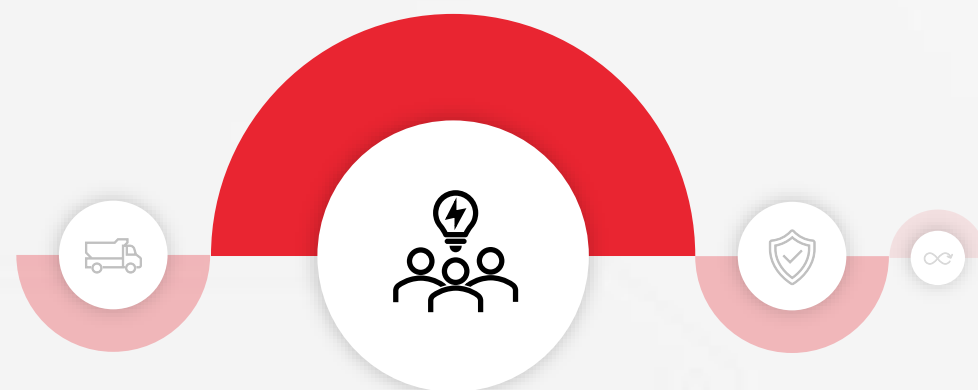


NEW SYSTEMS



HARDWARE





SYSTEM TEAM

R&D CENTER DIVISIONS

SPARE PARTS AND DOCUMENTATION

ISUZU ANADOLU GRUBU

Genel Kataloglar Genel Arama Yardım Taleplerim Pazaryeri Profilim Güvenli Çıkış

Ürün Serisi / Ürün Numarası: 3899942041100

Ürün Adı: KENDO / INTERLINER CNG 13M

Model Kodu: 3899942041100

Ürün Tarihi: Özel Bilgi

Katalog Grup Listesi:

- 924 - Basamak Alüminyumları
- 925 - Taban Kaplamaları
- 927 - Sigorta Kırma Sigortacı Lax. Mux Ve C
- 929 - Tavan Ve Yan Kaplamalar Ve Kım Cita
- 930 - Tavan Ay Ve Hopörler
- 931 - Dolap, Motor Kapagı Ve Hat Lev
- 932 - Perde, Korye, Kılık Ve Askılar
- 933 - Şapkalıklar
- 934 - Çamaşır Çamaşlıkları Ve Sep
- 935 - Koltuklar, Kasegözetler Ve Em Kır
- 936 - Diğ Trim
- 938 - Havalandırma Kapakları Ve Aap
- 939 - Radyo, Ant, İç Dik Ayarlar

Alf Resim Numarası: Alf Resim Katalog Grubu: E3000100_050_01_0100

001003

001 387837876001

LASTIK PROFİL, ARKA KAPI

Kullanım Mikatı: 1

001 387837876101

LASTIK PROFİL, ARKA KAPI

Kullanım Mikatı: 1

002 38438762001

KARİKAS, ARKA KAPI CN KANAT

CITIBUS

USER MANUAL

ANADOLU ISUZU

PLM SYSTEMS



AG SERVİS MASASI

Service Desk Quick Profile

Dgsya Görünüm Ara (E)

Skorbord güncel tarihi
03/11/2022 10:49:21

Sayıları Güncelle

Skorbord Alt+X

- Bana Atanan Tüm Talepler
- My Saved Searches
- Grubuma Atananlar
- Arıza Biletleri
- Talep Biletleri
- Benim Açtıklarım



3DEXPERIENCE R2018x
© 2017 Dassault Systèmes. All rights reserved.

ERP CONFIGURATION



Genel

Paket Seçimi: **Std Değil Yurtiçisi-E6e-Novocitiife-Yeni**

Araç Sınıfı: **Class1**

Boya Türü: **Opak Boya**

Ral Kodu: **Yeşil Pantone-583c-B7bf10 Beyaz-9147-F1foea**

Logo: **Isuzu**

Dil: **İngilizce/Radyo,saat,dur,Buton**

Wax Kaplama: **Wax Kaplama (Araç Altı)**

Engelli Rampası: **Sensörlü Manuel Rampa**

Arka Tampon: **Kısa**

Emisyon: **E6e**

Batarya/Güç Paketi: **Bu Model İçin Geçersizdir**

Koltuk Özellikleri

Koltuk Sayısı (Sabit): **21 Kisiilik**

Katların Koltuk: **4 Kattanır Koltuk**

Engelli Bölgesi: **Sirt Dayama (Korug+cam)**

Usb(Yölcü): **Usb Yok**

Sofor Koltuğu Markası: **Grammer**

Sofor Koltuğu Emniyet Kemeri: **Var**

3D V+R

3DEXPERIENCE

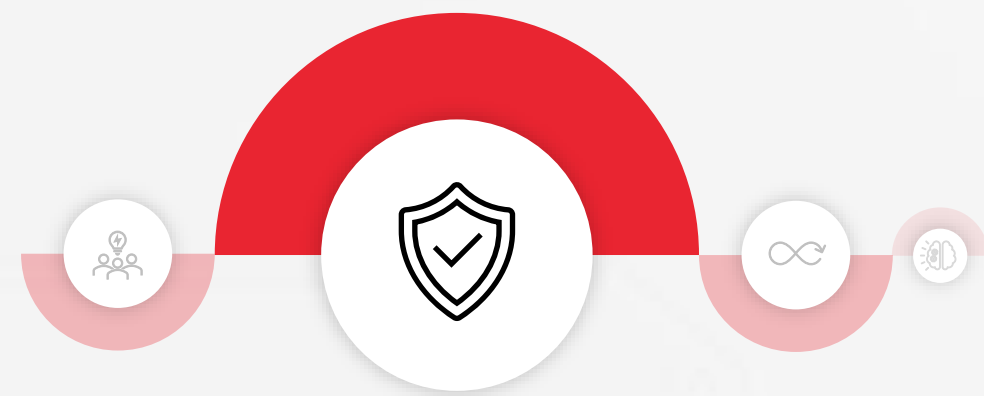
- 399996710000-0-0-GOVDE-In Work-DIGISU (399996810000.1)
- 399996720000-0-0-YURUR AKSAM-In Work-DIGISU (399996820000.1)
- 399996730000-0-0-GUC PAKETI-In Work-DIGISU (399996830000.1)
- 399996740000-0-0-DIS TRIM-In Work-DIGISU (399996840000.1)
- 399996750000-0-0-IC TRIM-In Work-DIGISU (399996850000.1)
- 399996771001-24-0-ETIKETLER-Released-PINARCAĞATAY (399996771001.1)
- 387863570-0-0-ACIL ÇIKIS ETİKETİ-Released-AYHANYELLI (387863570.1)
- 3D385369-0-0-Released-AYHANYELLI
- xy plane
- yz plane
- zx plane
- Axis Systems
- PartBody
- 387863570-0-0-ACIL ÇIKIS ETİKETİ-Released-AYHANYELLI
- Materials
- Paper (387863570-0-0-ACIL ÇIKIS ETİKETİ-Released-AYHANYELLI)
- 302520510101-0-0-PERCİN, POP, SXİ-Released-MUKSİTAKSU (302520510101.1)
- 302520510101-0-0-PERCİN, POP, SXİ-Released-MUKSİTAKSU (302520510101.2)
- 302520510101-0-0-PERCİN, POP, SXİ-Released-MUKSİTAKSU (302520510101.3)
- 302520510101-0-0-PERCİN, POP, SXİ-Released-MUKSİTAKSU (302520510101.4)
- 387002428-2-0-ETİKET, YANGIN SONDURUCU-Released-MEHMETBOZASLAN (387002428.1)
- 387047004-0-0-ETİKET, ONİSİTİCİ UYARI TR-Released-MUKSİTAKSU (387047004.1)

CAD DATA



ALOS STANDART PARÇALAR

- ALOS STD CIVATA_30001-30015
- ALTIKOSEBASLI CIVATA
- 3.0001 ALTIKOSEBASLI CIV
- 8 KAPLAMA
- 3 KAPLAMA
- 5 KAPLAMA
- 6 KAPLAMA
- 4 KAPLAMA
- 3.0002 ALTIKOSEBASLI CIV
- 3.0003 ALTIKOSEBASLI CIV
- 3.0004 ALTIKOSEBASLI CIV
- 3.0005 ALTIKOSEBASLI CIV
- 3.0006 ALTIKOSEBASLI CIV
- 3.0007 ALTIKOSEBASLI CIV
- 3.0008 ALTIKOSEBASLI CIV
- SİLİNDİRİK BASLI CIVATA
- ALTIKOSEBASLI FLANŞLI CIVAT
- KELEBEK BASLI CIVATA
- ALOS STD VIDA_30150-30199
- ALOS STD RONDELA_30100-3014
- ALOS STD SOMUN_30050-30092
- ALOS STD KELEPÇE_30525-30540
- ALOS STD PERÇİNLER_30350-303
- ALOS STD RİM VE PERNO_30550-3
- ALOS STD KOPULYA_30300
- ALOS STD CONTA_30400-30403
- ALOS STD SAPLAMA_30200-3024



VALIDATION

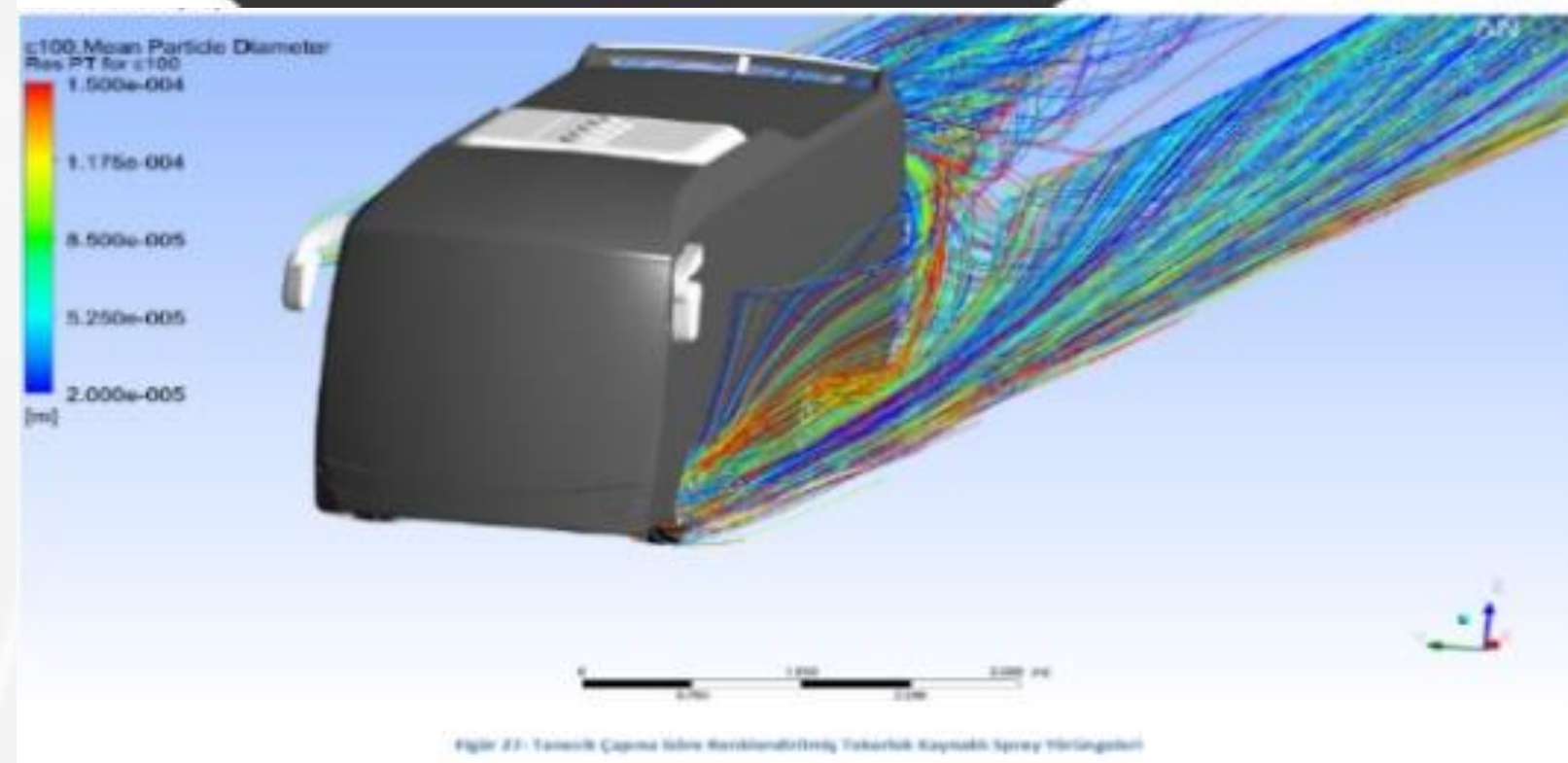
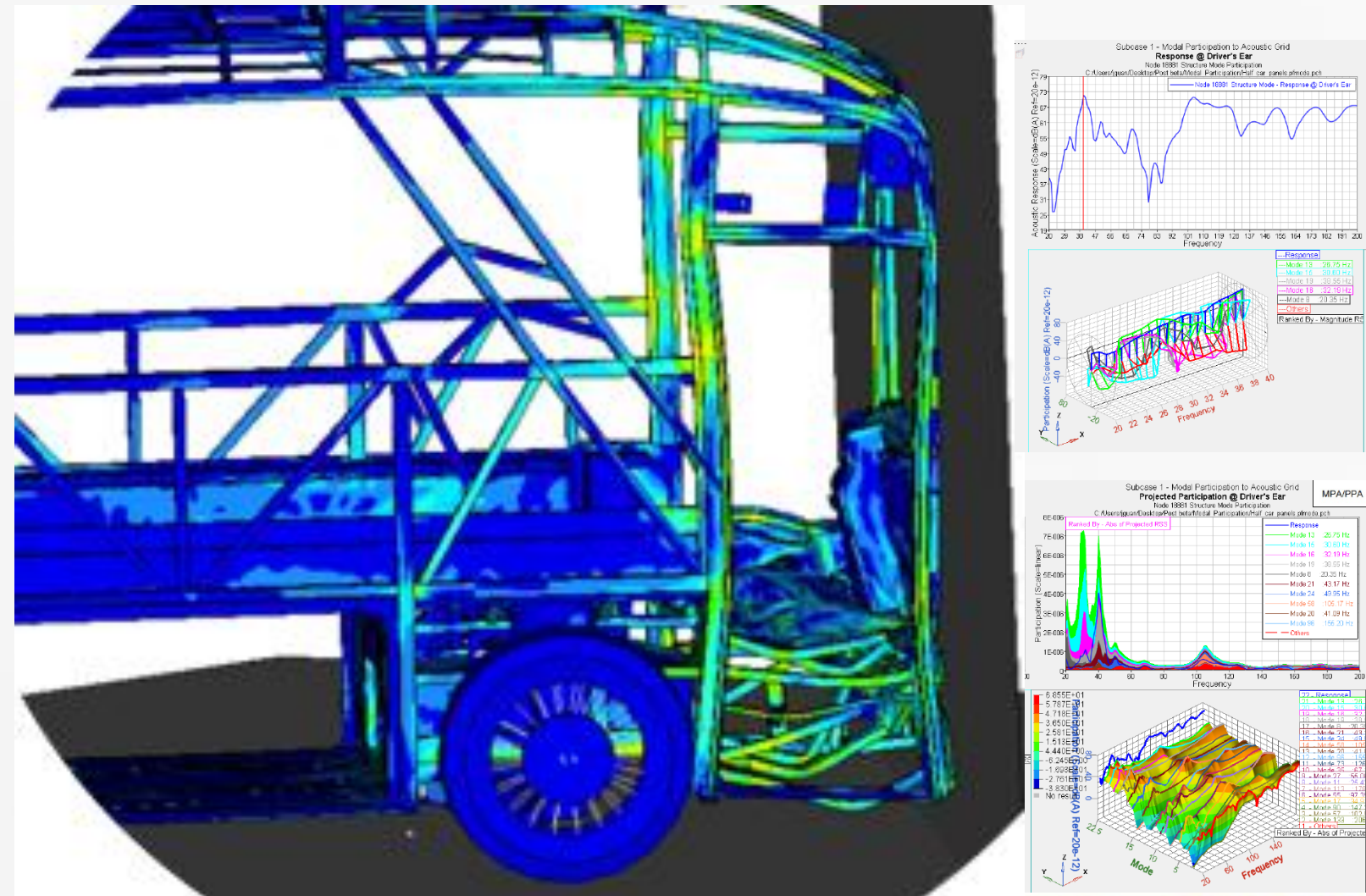
R&D CENTER DIVISIONS



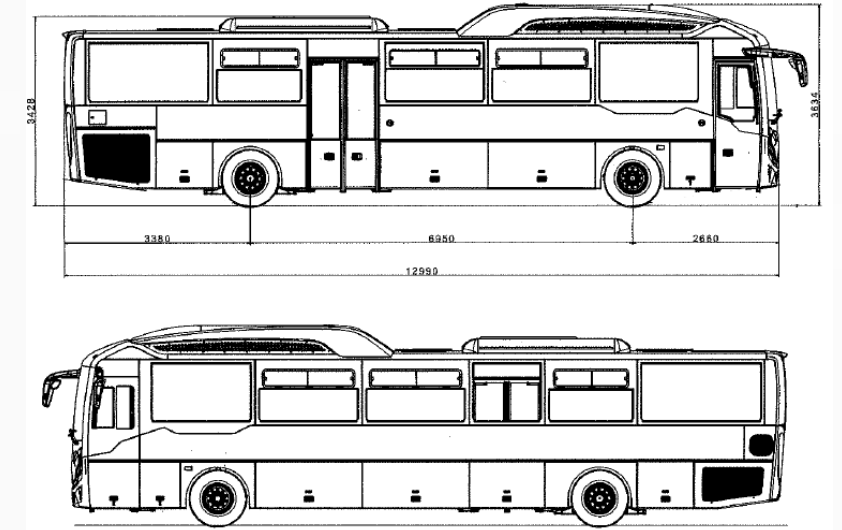
TEST

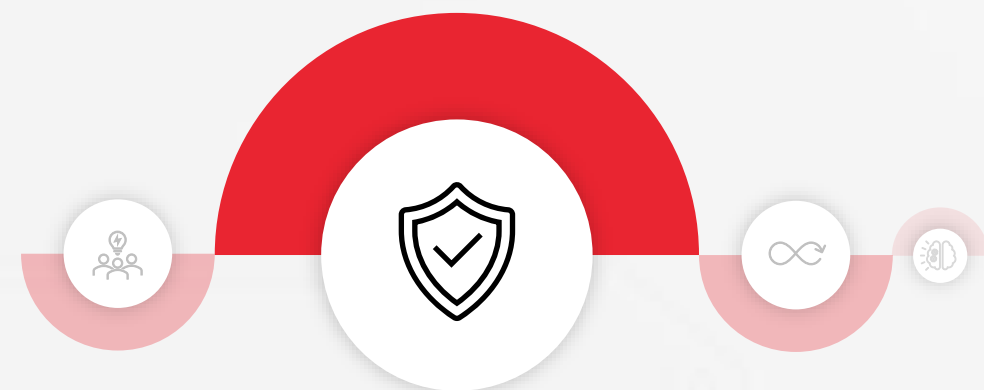


VIRTUAL ANALYSIS



HOMOLOGATION

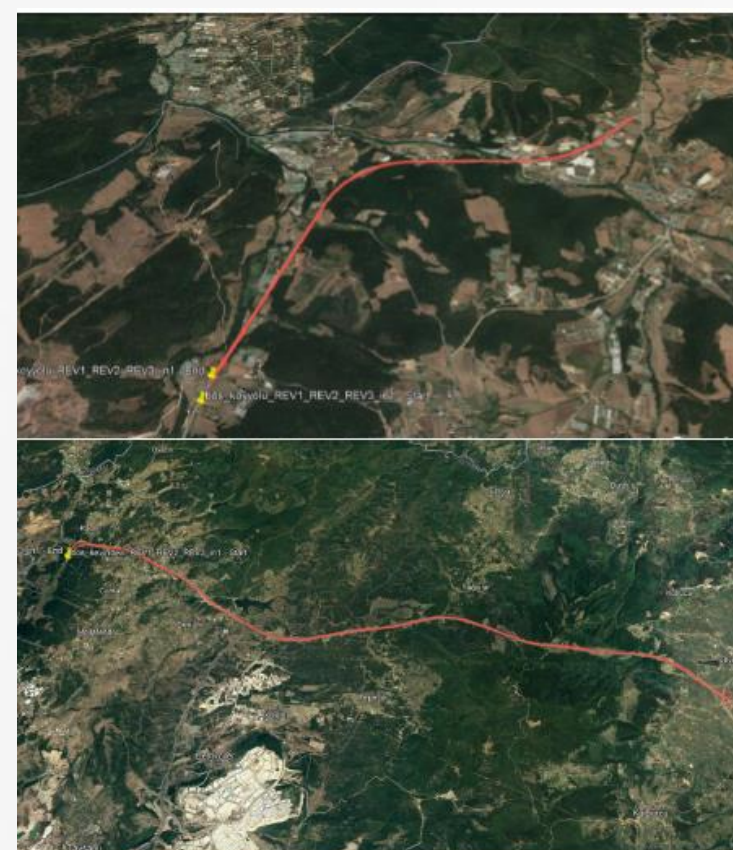
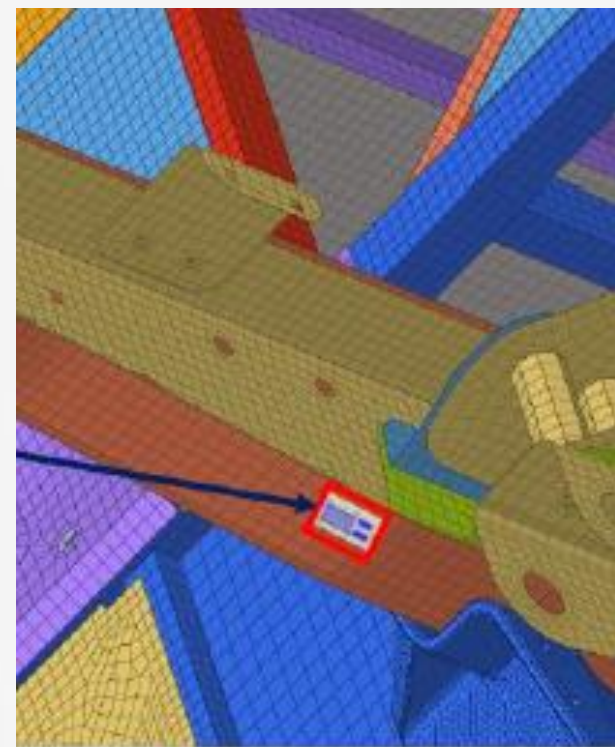
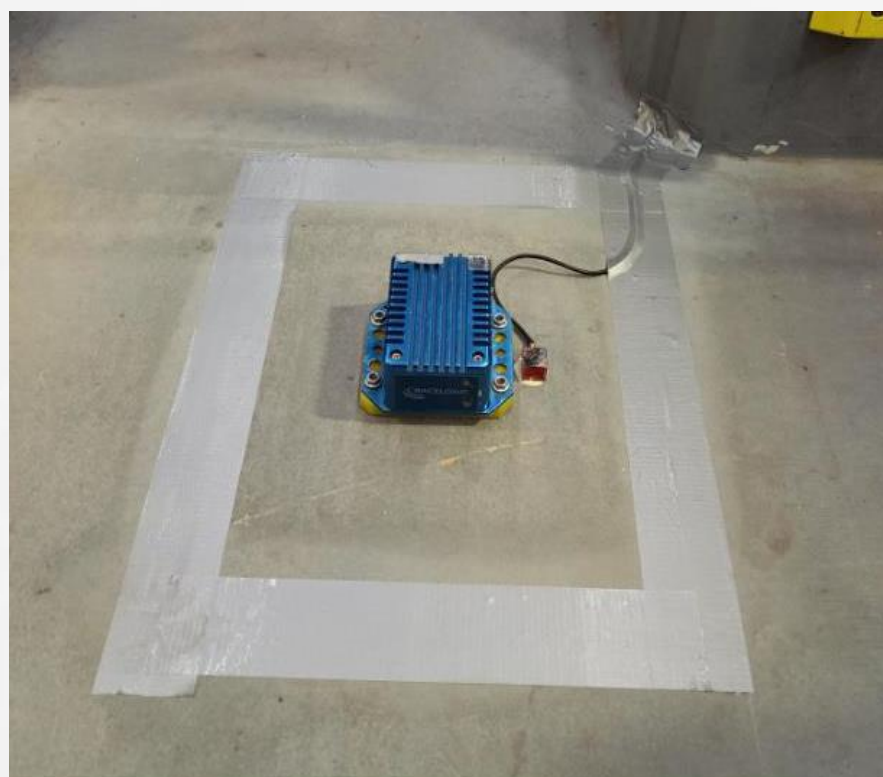




VALIDATION

R&D CENTER DIVISIONS

TEST-ANALYSIS CORRELATION



ACCELERATION MEASUREMENTS

STRAIN GAUGE MEASUREMENTS

ROUGH ROAD TESTS

THERMAL TESTS:

- FOG TEST
- ICE TEST
- TASE TESTS

VEHICLE DYNAMICS TESTS:

- ANTI-ROLL BAR TEST
- TURNING RADIUS TEST
- HUMB PASS TEST
- LANE CHANGE TEST
- STABILITY TEST

BODY VALIDATION TESTS:

- VEHICLE LOADING (STRAIN GAUGE MEASUREMENT)
- WHEEL-COG IMPACT TRANSMISSION (ACCELESS MEASUREMENT)
- BROKEN ROAD-BODY VIBRATION (STRAIN GAUGE MEASUREMENT)

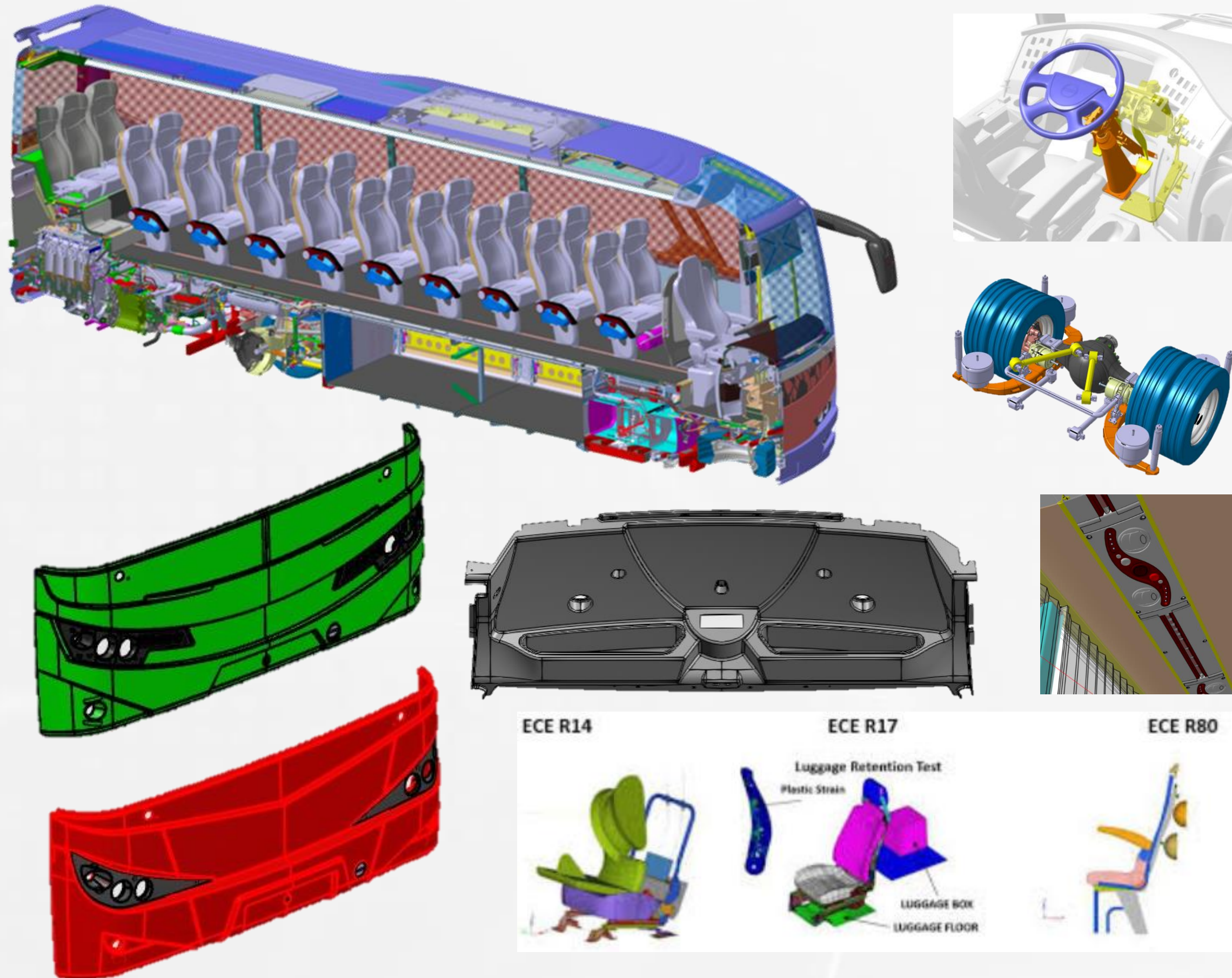
10% CORRELATION TARGET ON ALL TESTS

R&D CENTER DIVISIONS

PRODUCT DEVELOPMENT

CUSTOMIZED VEHICLES

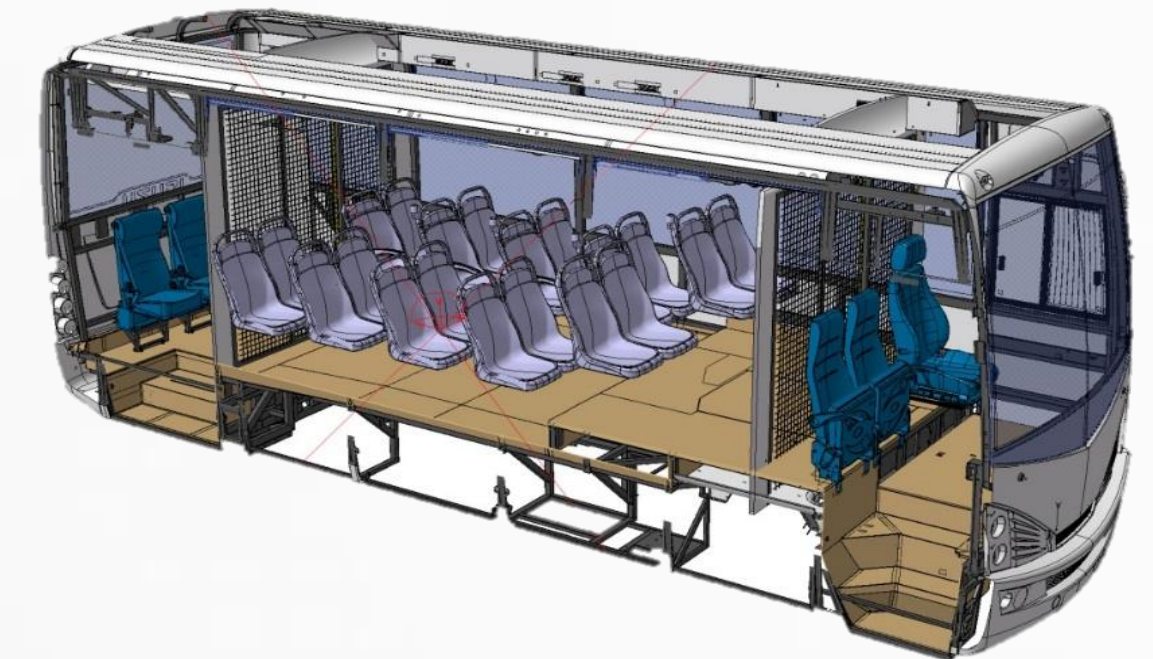
PRODUCT DEVELOPMENT



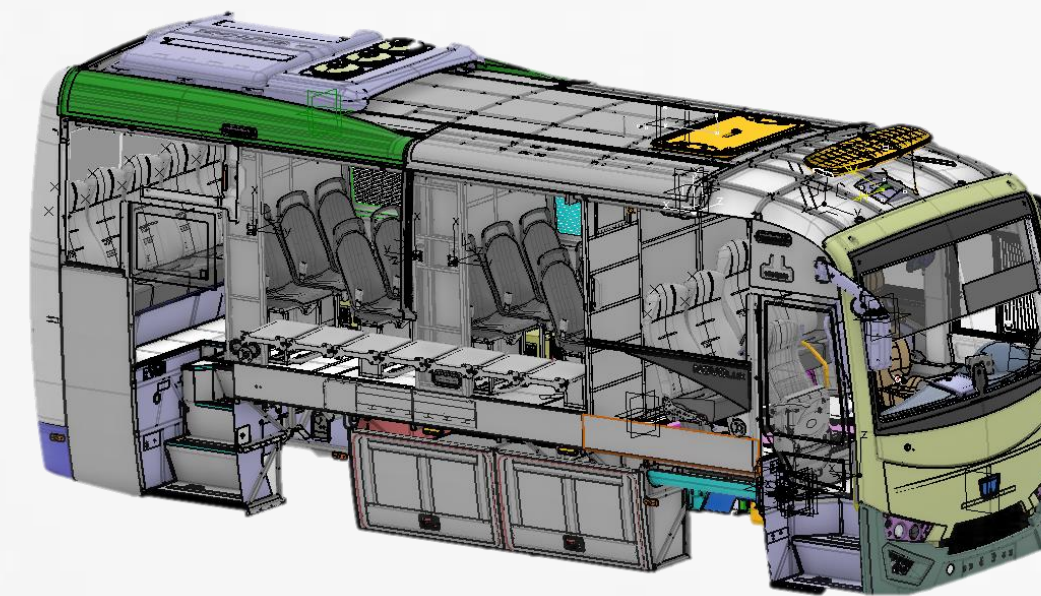
CUSTOMIZED VEHICLES



ARMORED PERSONNEL VEHICLE



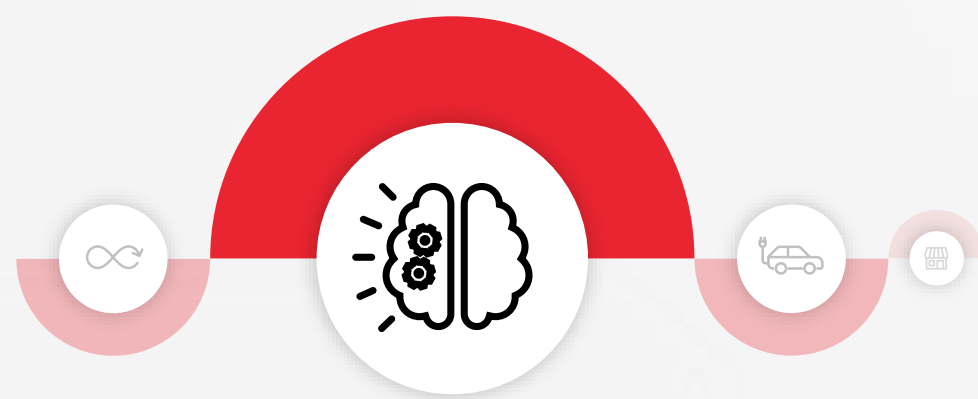
DETENTION VEHICLE



PRISONER TRANSPORT VEHICLE



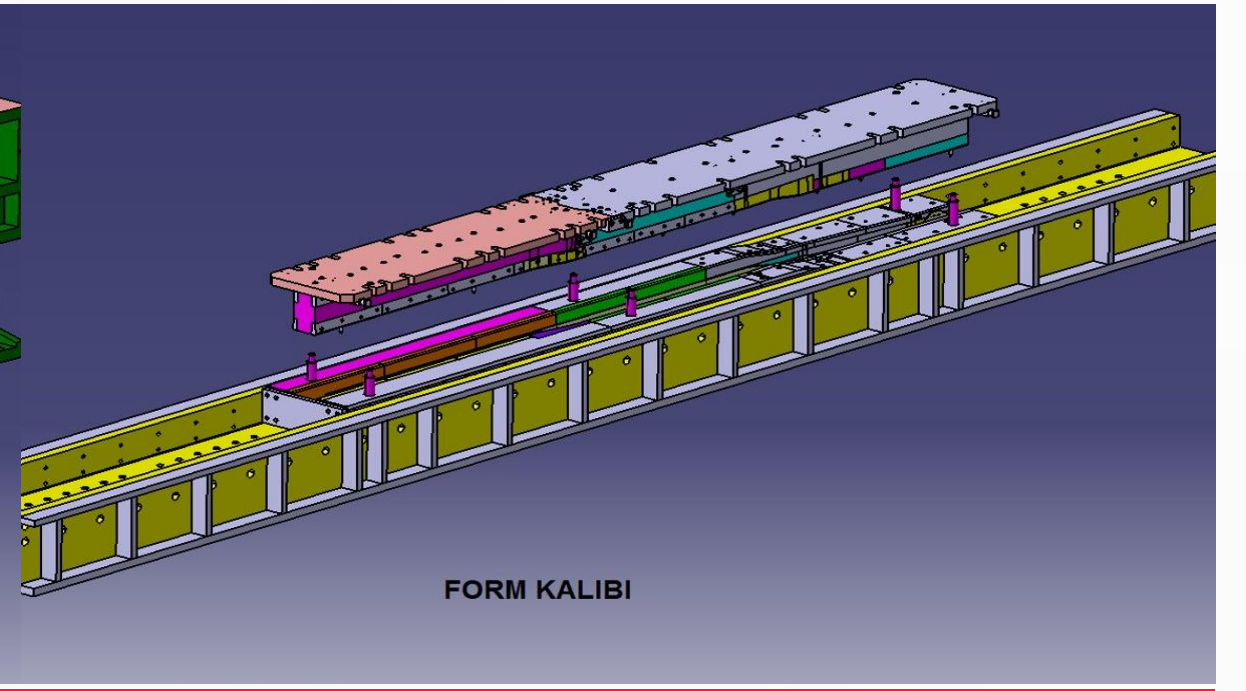
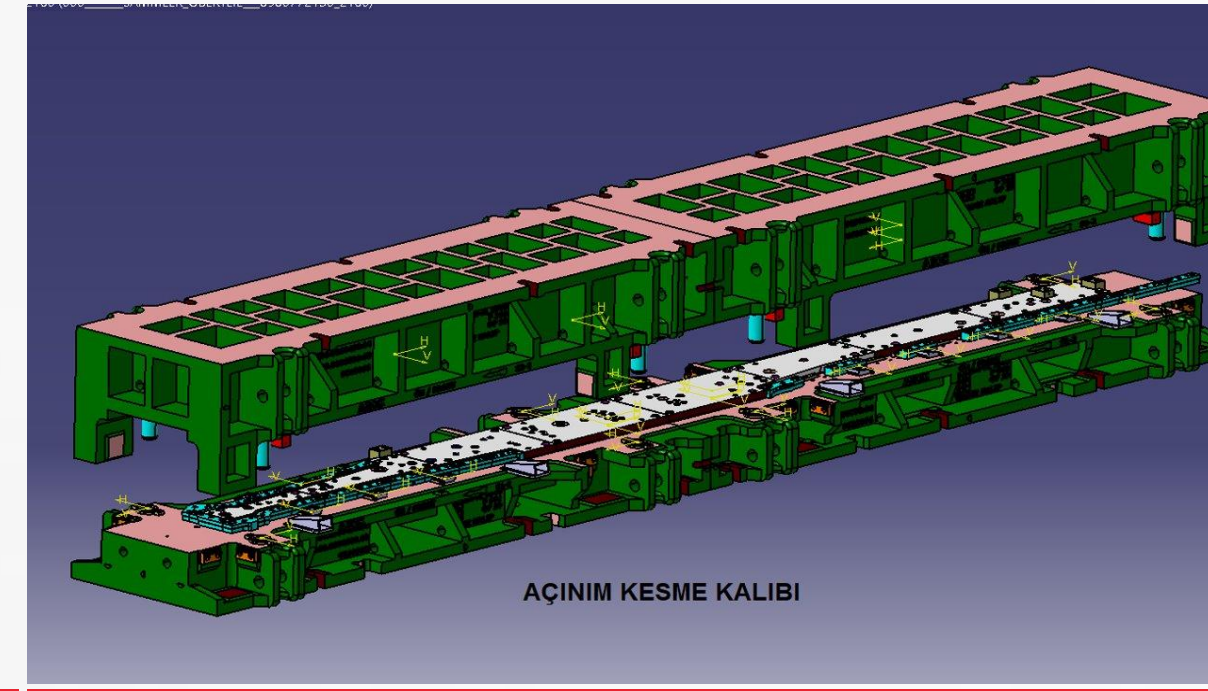
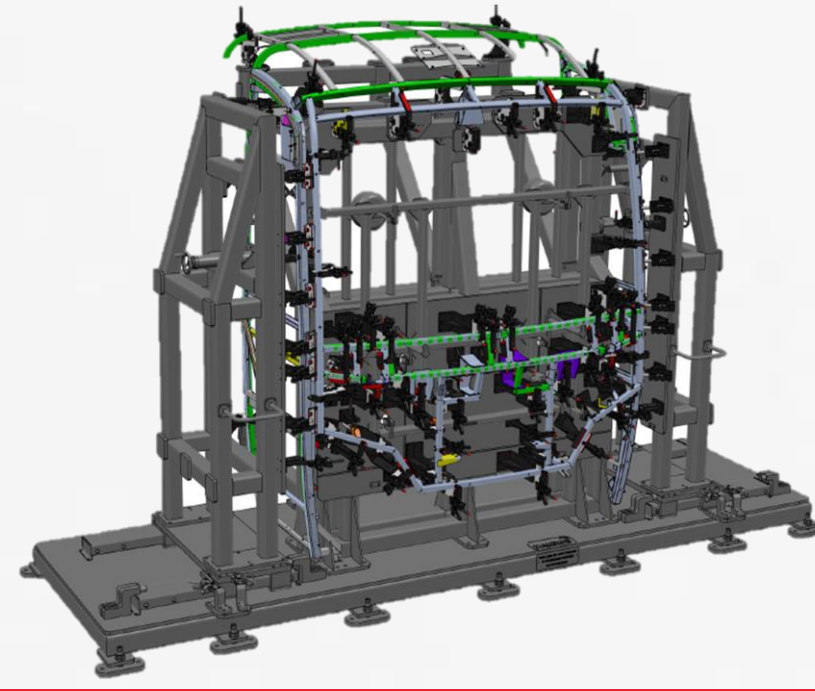
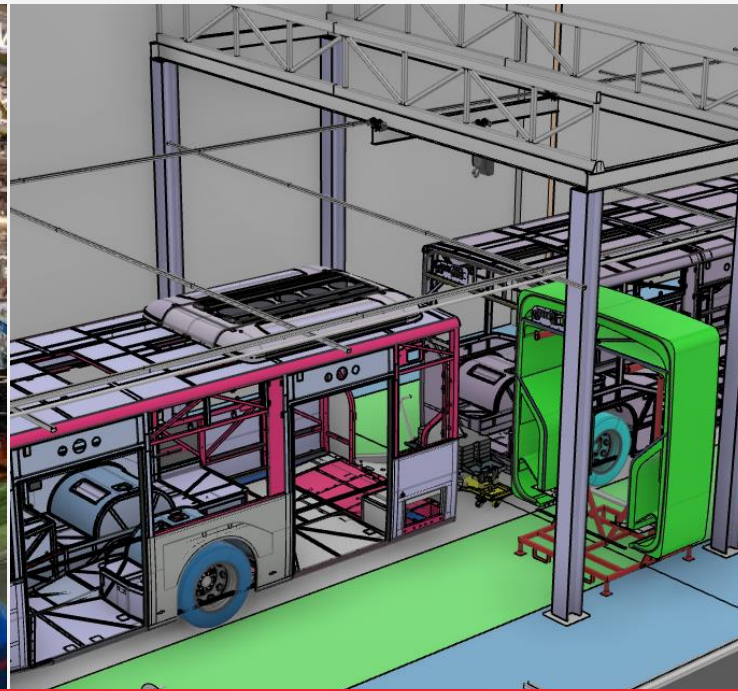
MOBILE CAFE



R&D CENTER DIVISIONS

PRODUCTION ENGINEERING

METHODS GROUP

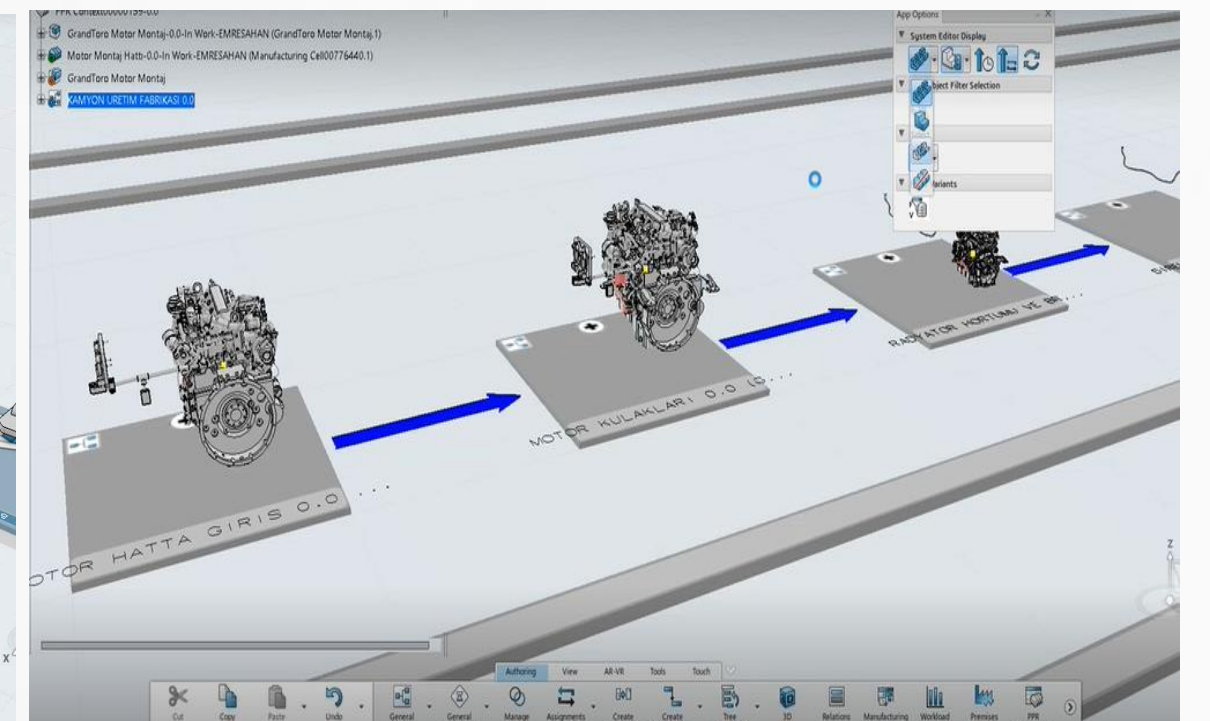
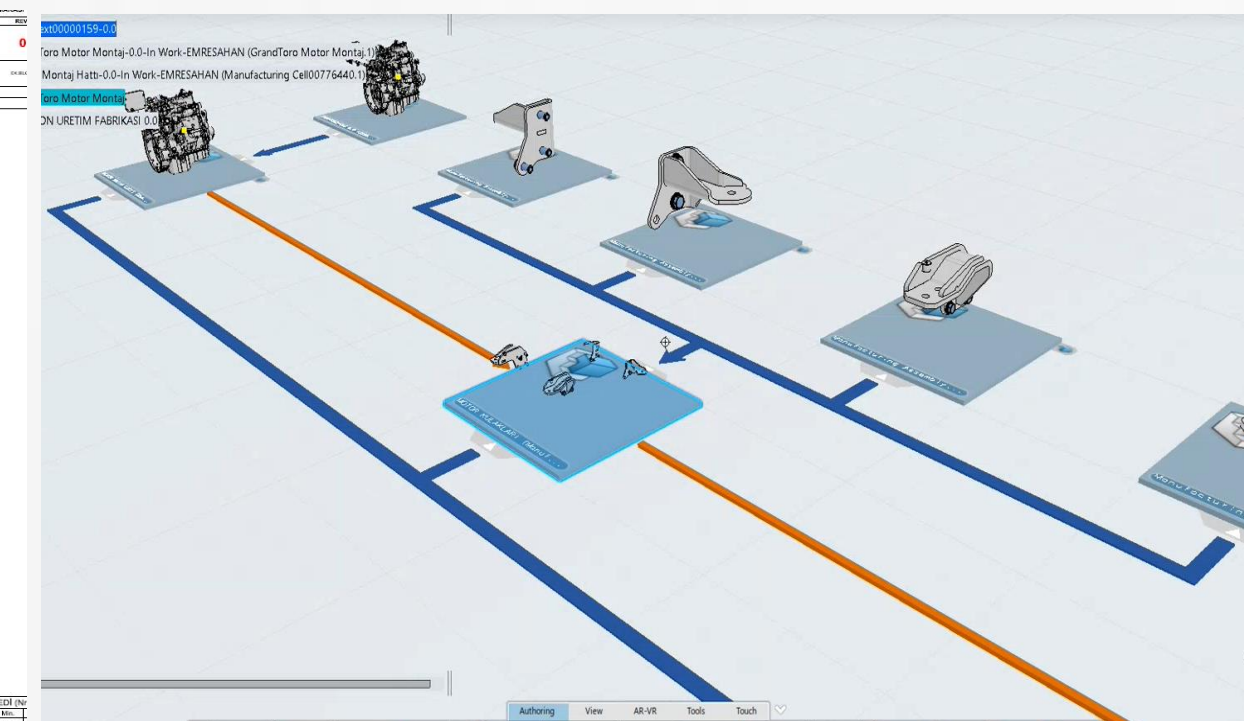
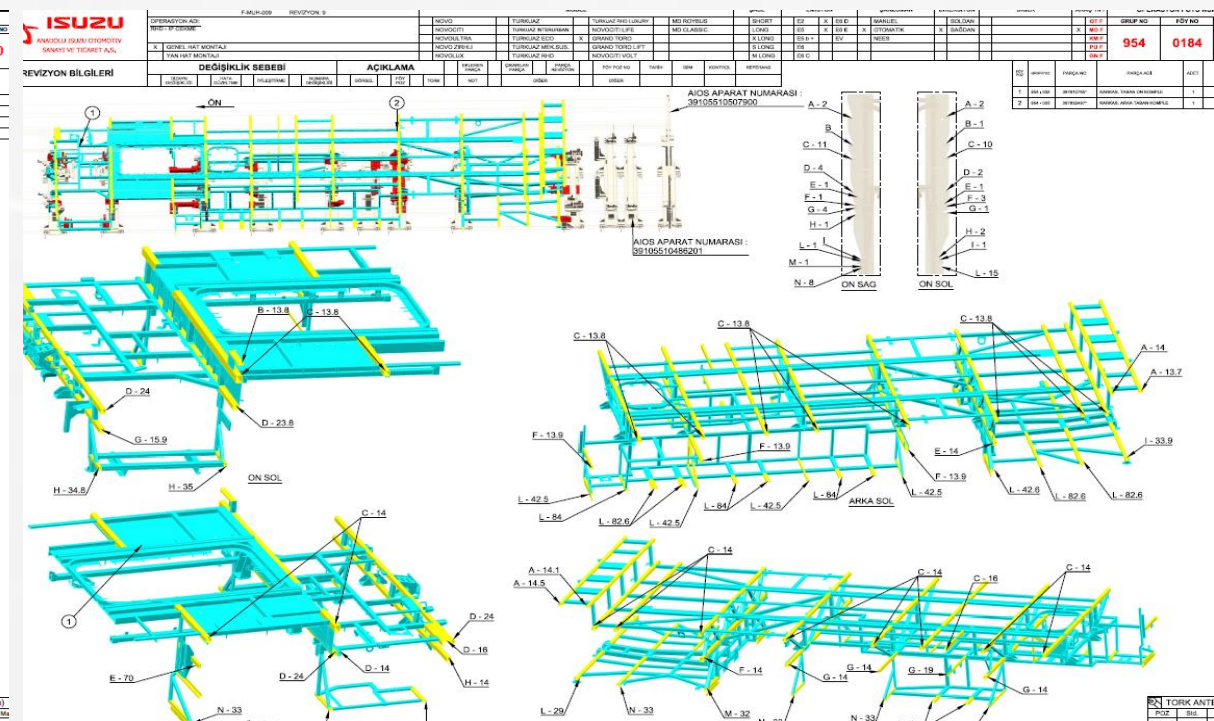
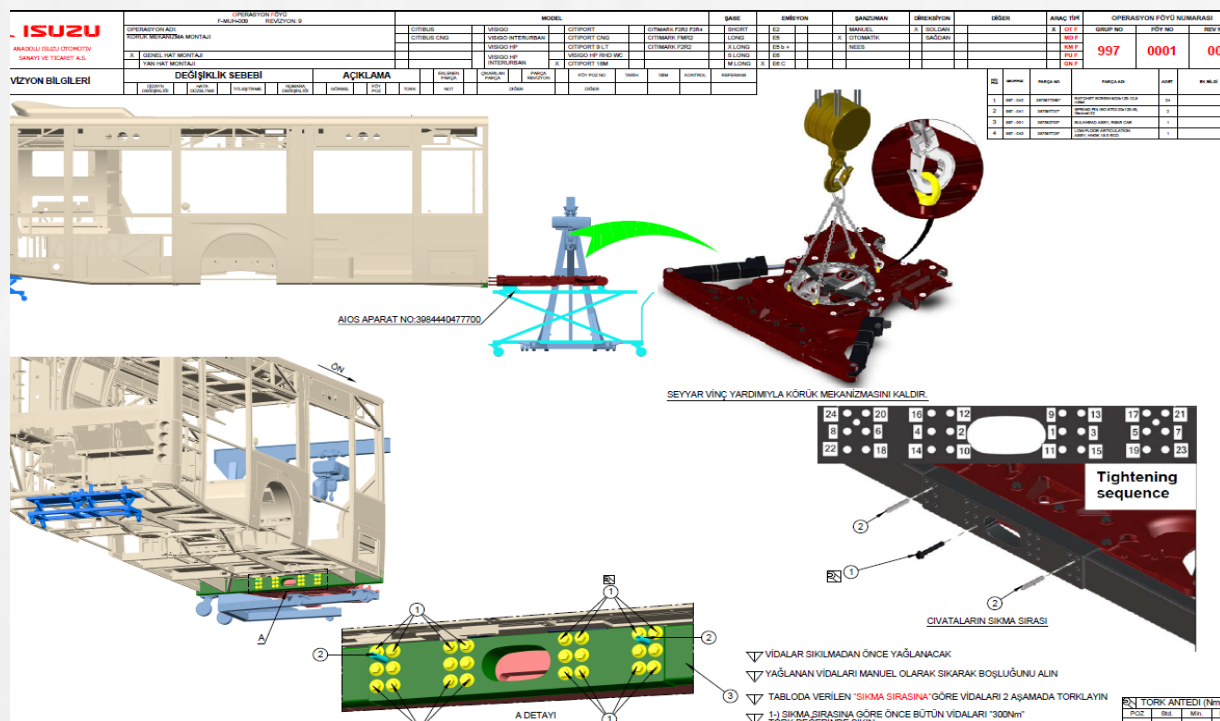


FACILITY INVESTMENT FEASIBILITY AND BUSINESS

FIXTURE

MOLD DESIGN AND NC PROGRAMMING

OPERATIONAL DOCUMENTATION



OPERATIONAL ASSEMBLY DEFINITION

PROTOTYPE
WORKSHOP



DEFENCE PROJECTS
WORKSHOP

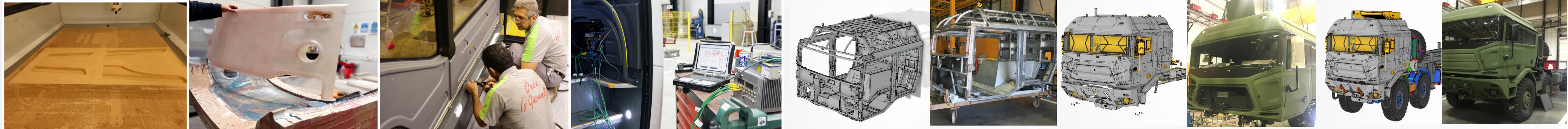
R&D CENTER DIVISIONS



PROTOTYPE WORKSHOP

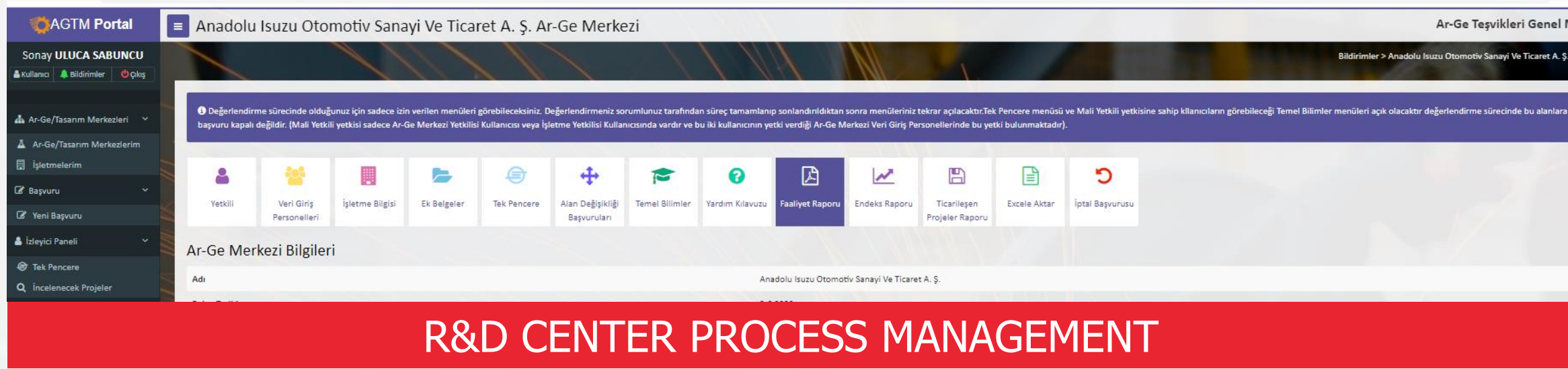


DEFENCE PROJECTS WORKSHOP



R&D CENTER DIVISIONS

INTELLECTUAL PROPERTY RIGHTS & INCENTIVES



R&D CENTER PROCESS MANAGEMENT



COLLABORATIONS

BUDGET TRACKING



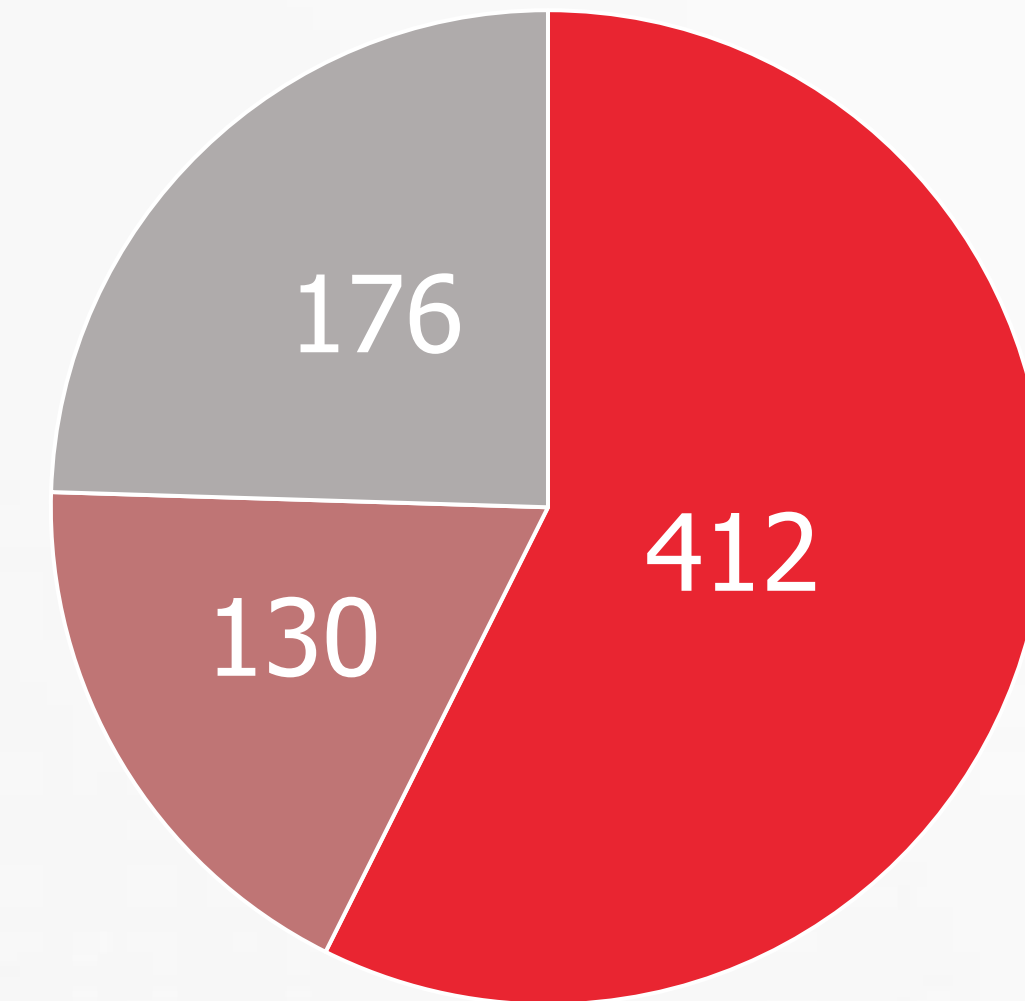
R&D PROJECT MANAGEMENT



INCENTIVES



APPLICATION TYPE



- PATENT, UTILITY MODEL
- COPYRIGHTS
- DESIGN REGISTRATION

9 UNIVERSITY COLLABORATIONS

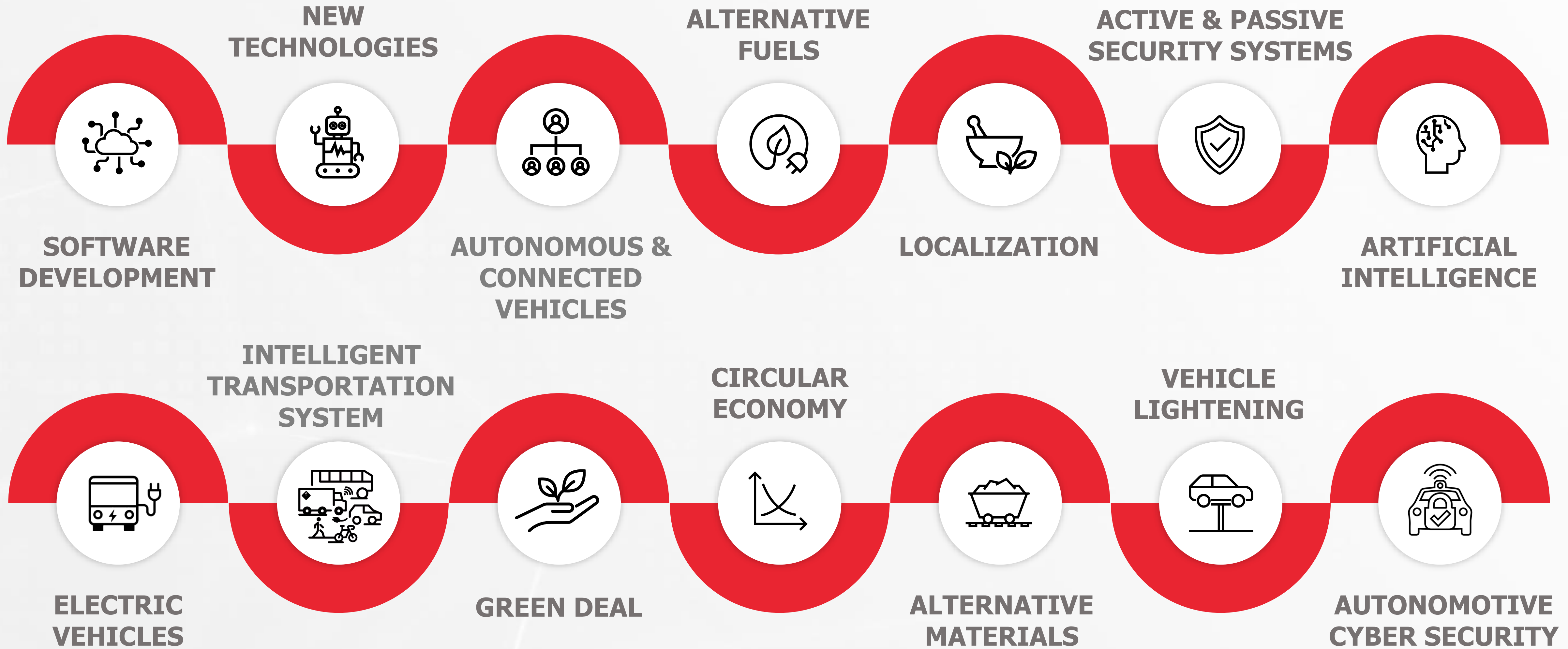
2 TUBITAK PROJECTS

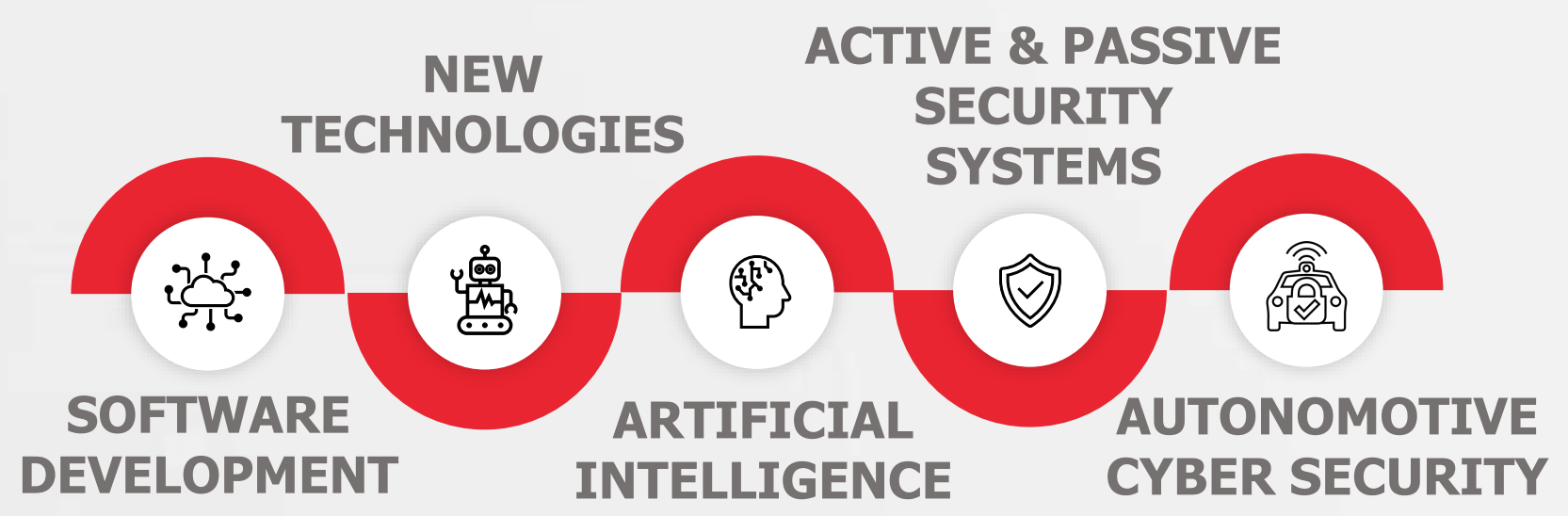
22 COOPERATION WITH SME

22/4 MSC / PHD STUDENTS

1 PRODUCT AND DESIGN DEVELOPMENT PROJECT BY THE MINISTRY OF TRADE

OUR FOCUS



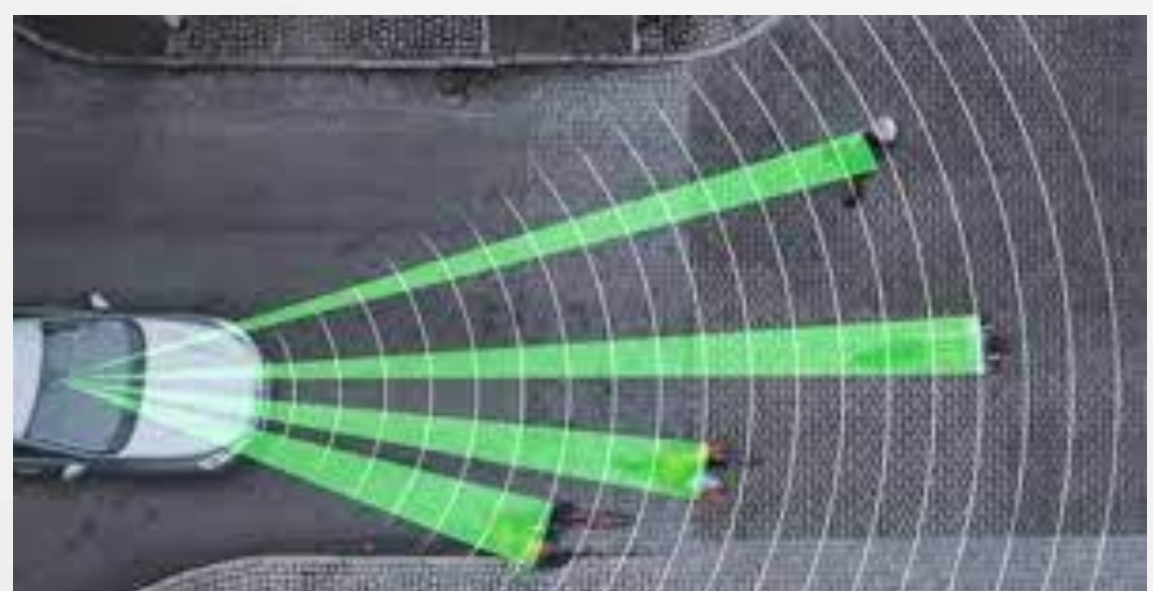


OUR FOCUS

INTELLIGENT TRANSPORTATION SYSTEMS



BLIND SPOT DETECTION SYSTEM



PEDESTRIAN AND BICYCLE DETECTION SYSTEM



TRAFFIC SIGNAL SYSTEM



DRIVER FAILURE AND VIOLATION DETECTION

ARTIFICIAL INTELLIGENCE



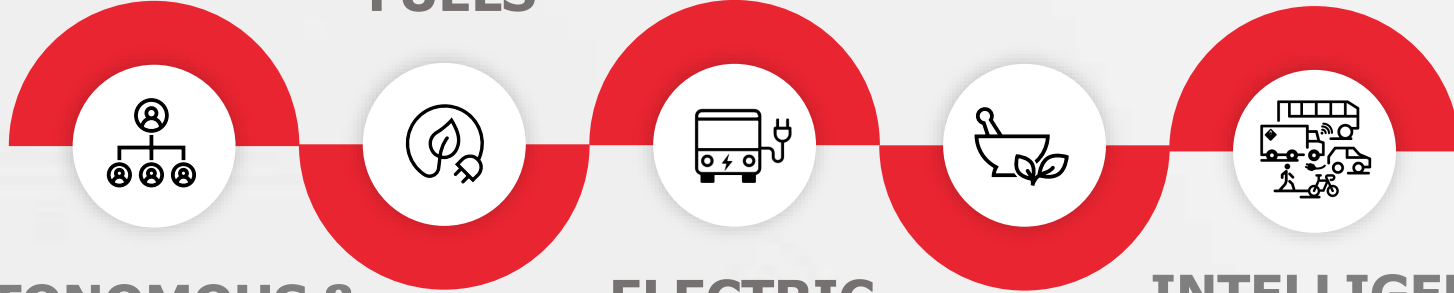
PREDICTIVE MAINTENANCE



OUR FOCUS

ALTERNATIVE FUELS

LOCALIZATION



AUTONOMOUS & CONNECTED VEHICLES

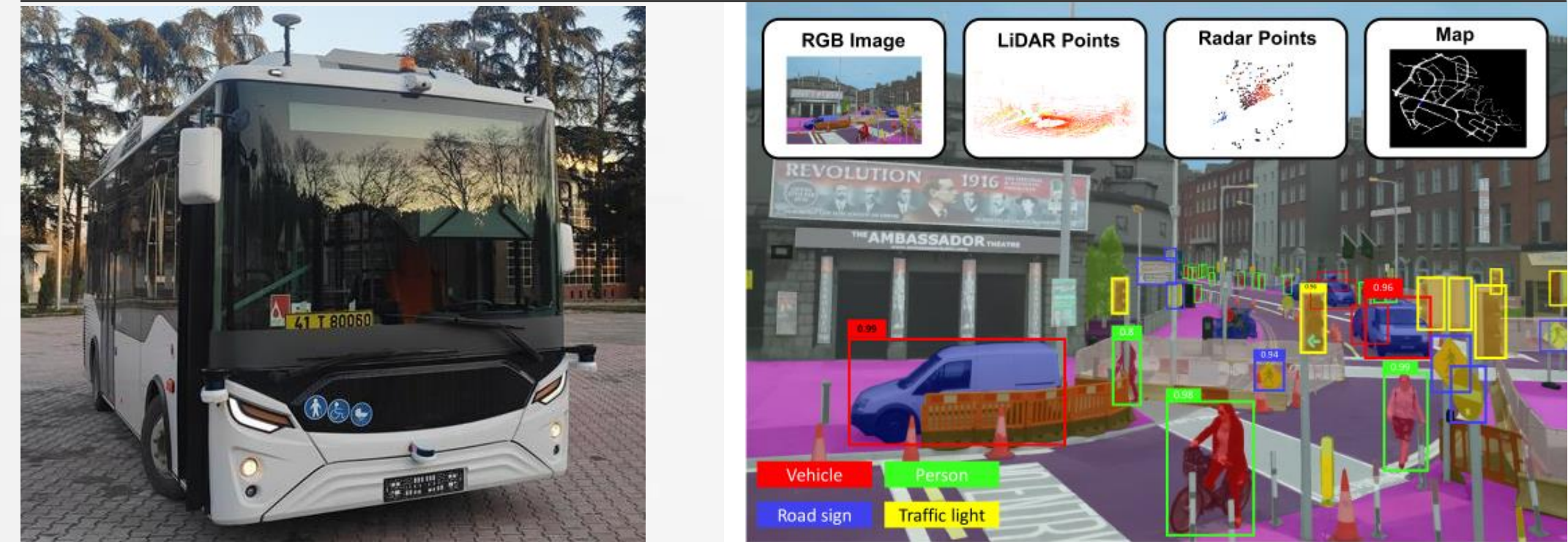
ELECTRIC VEHICLES

INTELLIGENT TRANSPORTATION SYSTEM

AUTOMOTIVE CYBER SECURITY



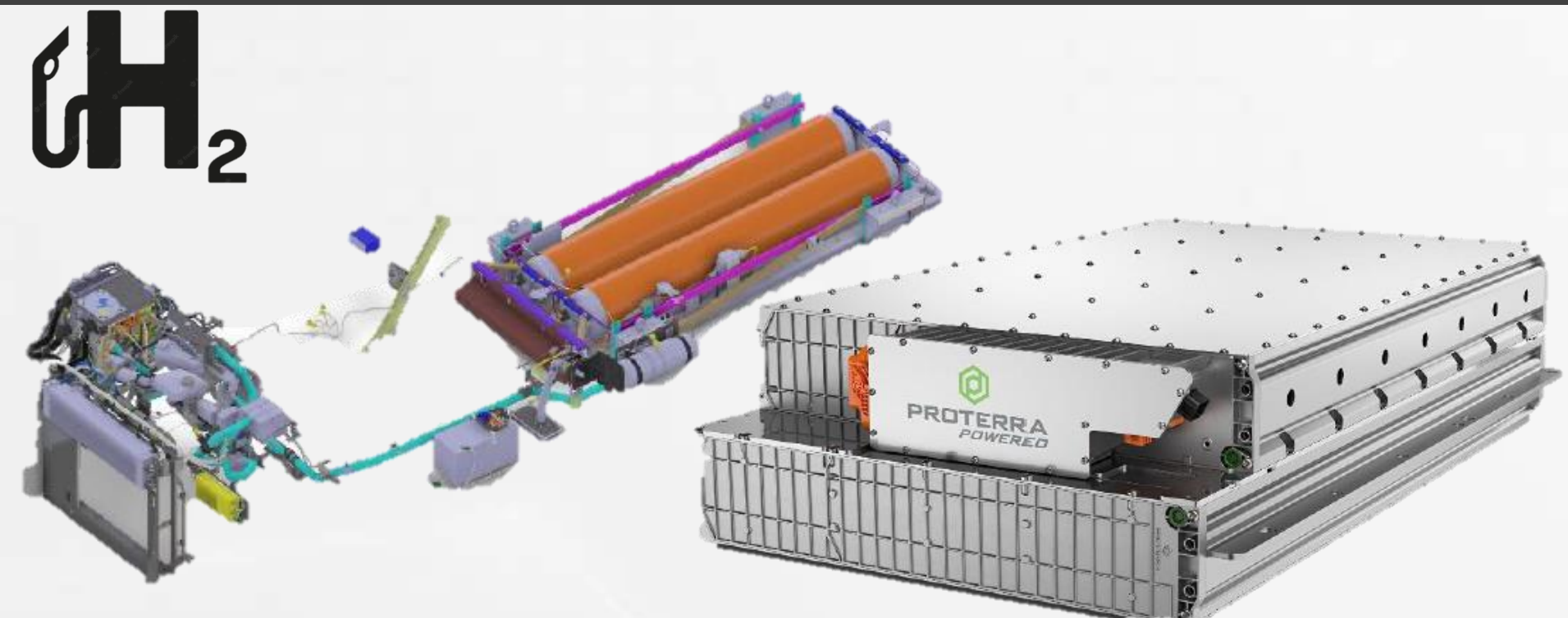
HARDWARE, SOFTWARE AND INFRASTRUCTURE DEVELOPMENT OF AUTONOMOUS DRIVING

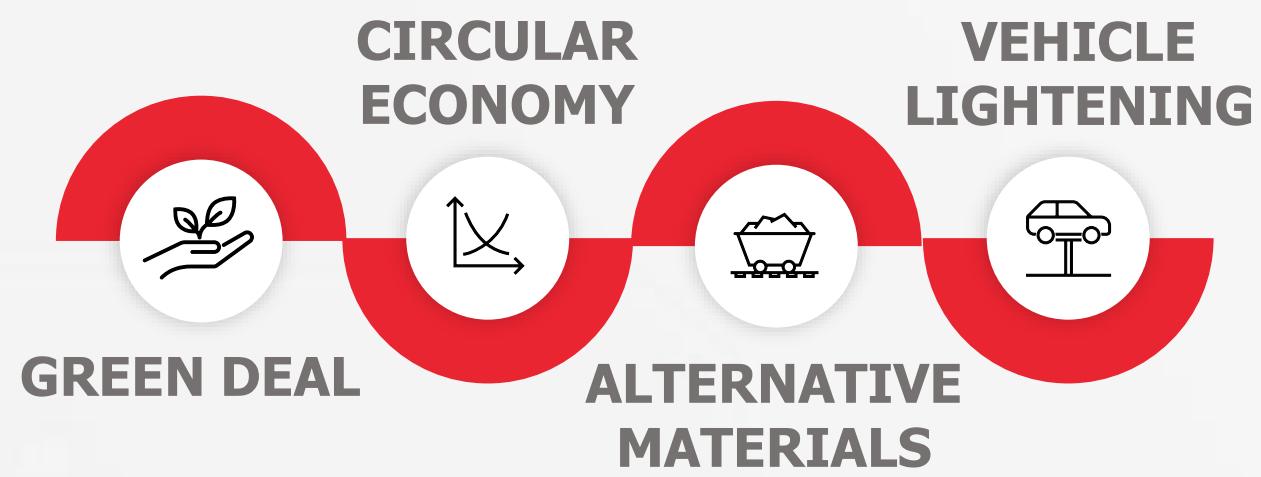


DATA ANALYSIS



ALTERNATIVE FUELS





OUR FOCUS

BIOMATERIAL



BIOMATERIALS WITH LINEN FIBER



BIOMATERIALS WITH HEMP FIBER



BIOMATERIALS WITH WASTE TEA FIBER



BIOCAL ADDITIVE COMPOSITE

ALTERNATIVE MATERIALS - LIGHTENING



CTP



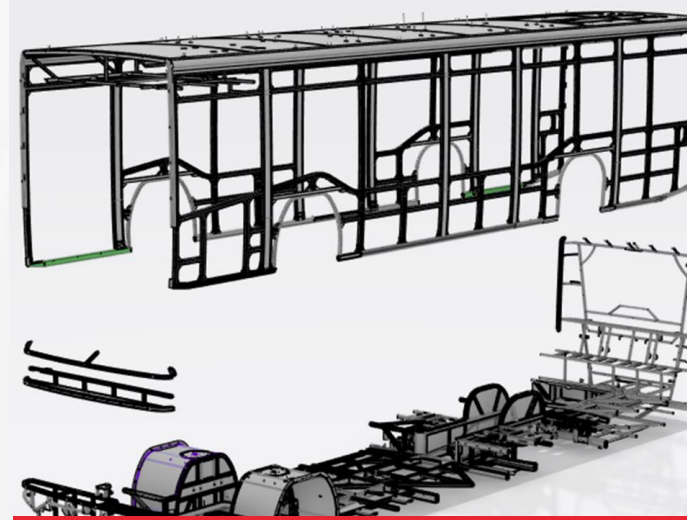
WOOD



FABRIC AIR CHANNEL

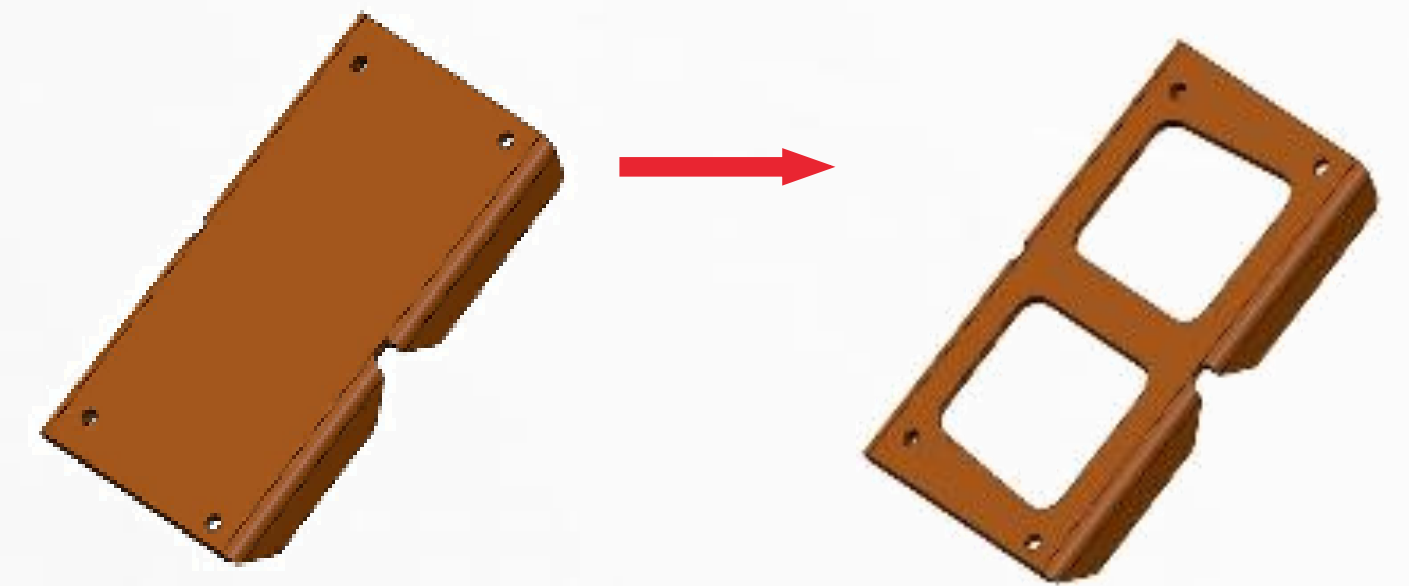


HDPE

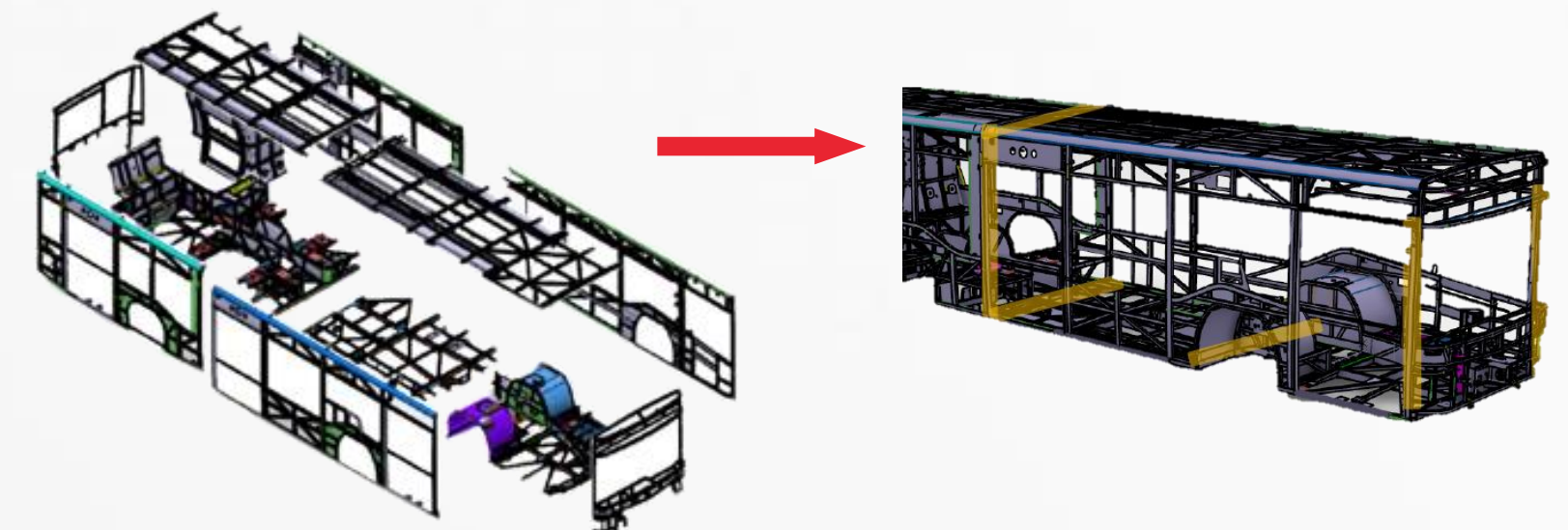


ALUMINUM BODY

CIRCULAR ECONOMY - LIGHTENING



COMPONENT GEOMETRY OPTIMIZATION



DISASSEMBLY, TRACEABILITY, RECYCLING FOCUSED DESIGN

REWARDS



TESİD | Türk Elektronik Sanayicileri Derneği

Yenilikçilik Yaratıcılık Ödülleri 2021
Yenilikçilik Yaratıcılık Ödülleri 2019

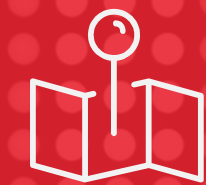




ANADOLU GROUP

ANADOLU ISUZU

www.anadoluisuzu.com.tr



Şekerpınar Mahallesi Otomotiv Caddesi N0:2 41435 ÇAYIROVA-KOCAELİ / TURKEY



+90 850 200 19 00

oluisuzu



@AnadoluIsuzu



@anadoluisuzu



/IsuzuTR



/anadolu-isuzu